

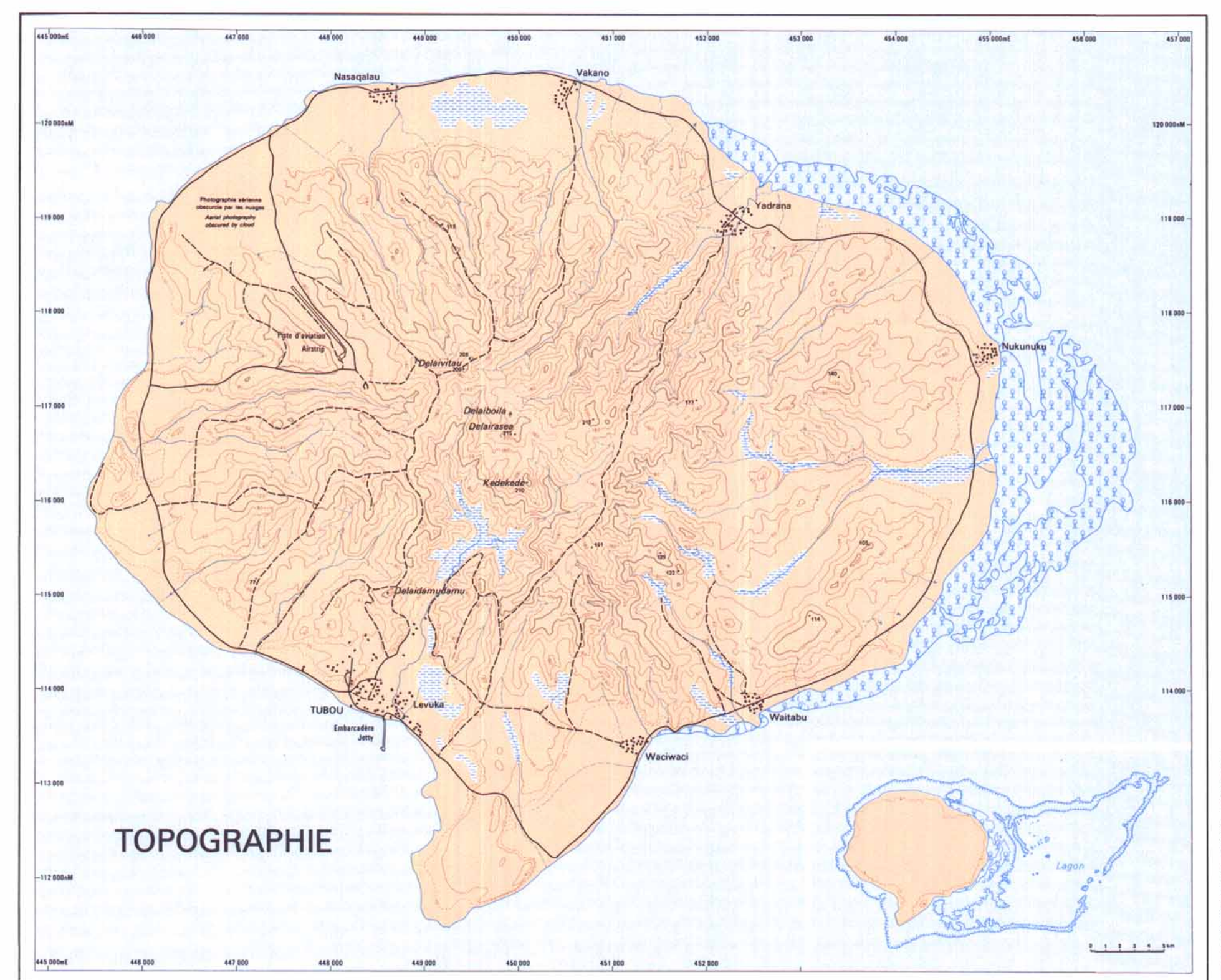
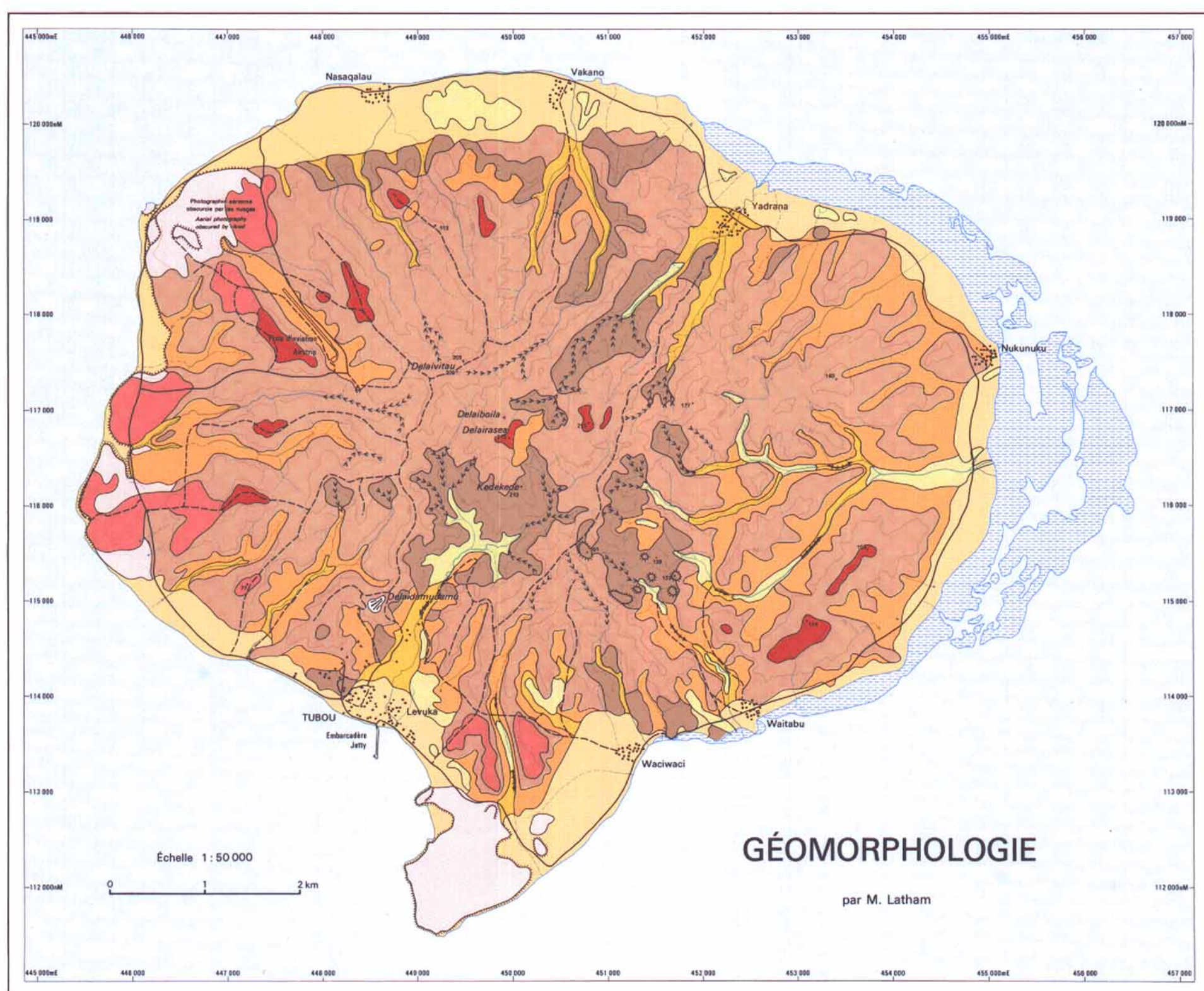
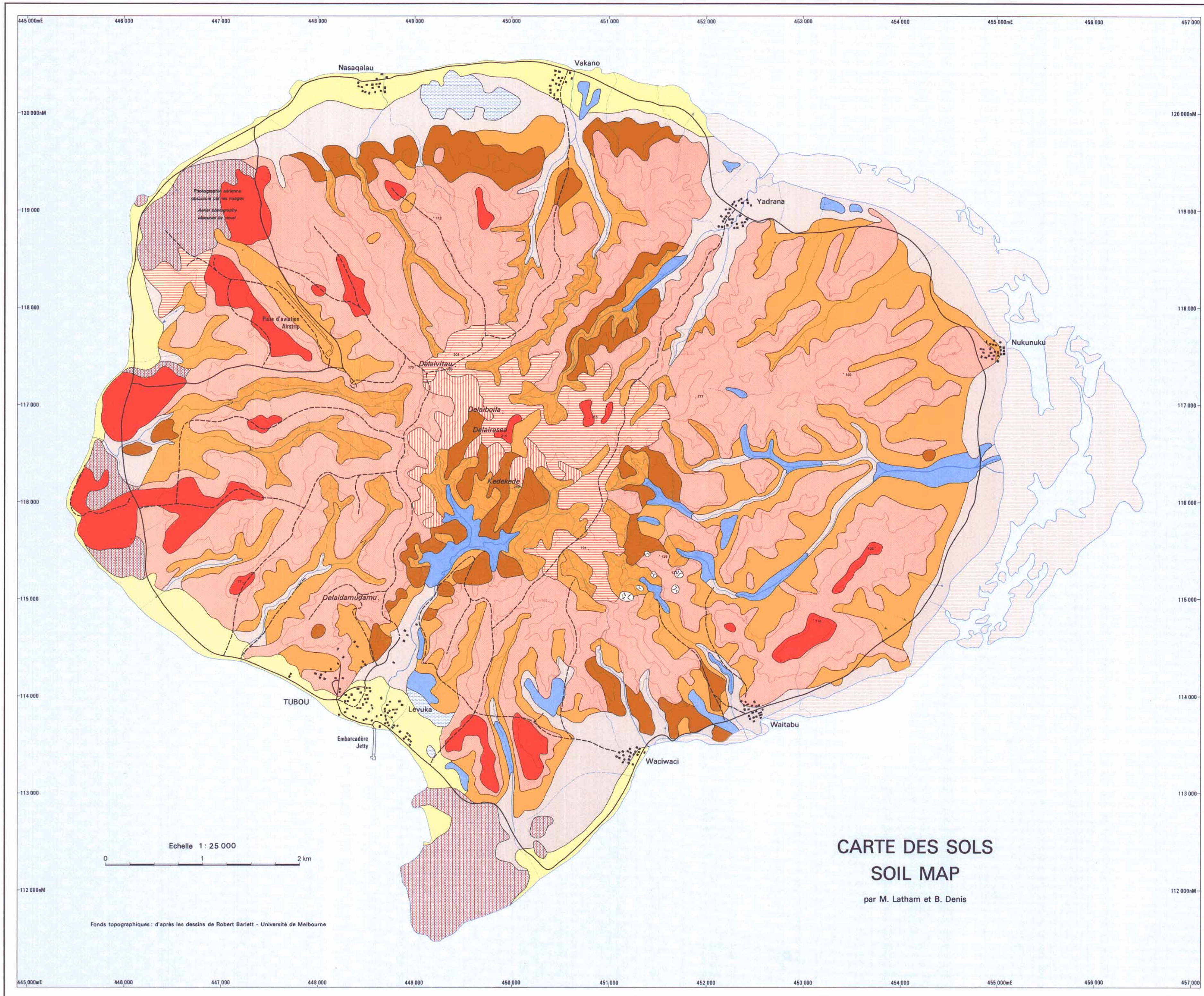
# FIDJI - FIJI

## LAKÉBA

### MILIEU TERRESTRE - TERRESTRIAL ENVIRONMENT

REPUBLIQUE FRANÇAISE  
OFFICE DE LA RECHERCHE  
SCIENTIFIQUE ET TECHNIQUE OUTRE-MER

UNITED NATIONS EDUCATIONAL SCIENTIFIC  
AND CULTURAL ORGANISATION  
UNITED NATIONS FUND FOR POPULATION ACTIVITIES



**Formes d'ablation - Ablation landforms**

- Culots volcaniques, conglomératiques, dénudés  
Bare rock, conglomeratic, volcanic plugs
- "Bad lands" sur altération profonde de roches volcaniques  
Bad lands on deeply weathered volcanics
- Versants à forte pente, sur roches volcaniques et calcaires  
Steep slopes on shallow weathered volcanics and limestones
- Versants à pente moyenne et sommets sur roches volcaniques  
Slopes and summits on deep ferrallitic weathered volcanics

**Formes d'accumulation - Accumulation landforms**

- Plateaux niveau 1a sur roches volcaniques,  
recouverts de formations bauxitiques manganiésifères  
Bauxitic and manganic formations on 1a level plateaus derived from volcanics
- Plateaux niveau 1b sur roches volcaniques et calcaires  
recouverts de formations bauxitiques manganiésifères  
Bauxitic and manganic formations on 1b level plateaus derived from volcanics and limestones
- Dépôts colluvio-alluviaux anciens, d'origine volcanique  
Older colluvial and alluvial deposits of volcanic origin

**Formes de relief particulières - Special landforms**

- Plaine côtière  
Coastal plain
- Plaines alluviales récentes  
Recent alluvial deposits
- Zones marécageuses  
Swamps
- Mangrove
- Relief karstique  
Karst
- Rapides  
Rapids
- Falaise  
Cliff
- Vallée aveugle  
Blind valley
- Talweg en V avec cascade  
V shaped valley with waterfall



Préparé pour le projet UNESCO/UNFPA d'étude de la population et de l'environnement (Fidji).  
Base map compiled in the Cartographic Laboratory Casbahs College of Advanced Education, from aerial photographs supplied by the Department of Lands, Fiji.  
Horizontal control based on coordinates of point Delaidamudemudu and bearings and distances of a control traverse as shown on a plan of Surveyor Parker, dated 15-2-1971, supplied by the Hydrographic Sector, Department of Lands, Fiji. Coordinates are assumed to be Cassini-Soldner; the origin and dimensions of the reference ellipsoid are unknown.

- Route principale normalement praticable  
Main road normally motorable
- Route forestière et piste principale  
Forestry road and main track
- Village  
Village
- Cours d'eau permanent  
Permanent stream
- Cours d'eau intermittent  
Intermittent stream
- Zone marécageuse  
Swamp
- Mangrove
- Vallée aveugle  
Blind valley
- Rivière souterraine  
Underground river
- Sommaut  
Peak
- Point coté  
Spot height
- Courbe de niveau mètre (100 mètres)  
Index contour at 100 metres intervals
- Courbe de niveau (20 mètres)  
Contour at 20 metres intervals
- Courbe de niveau intercalaire (10 mètres)  
Supplementary 10 metres contour