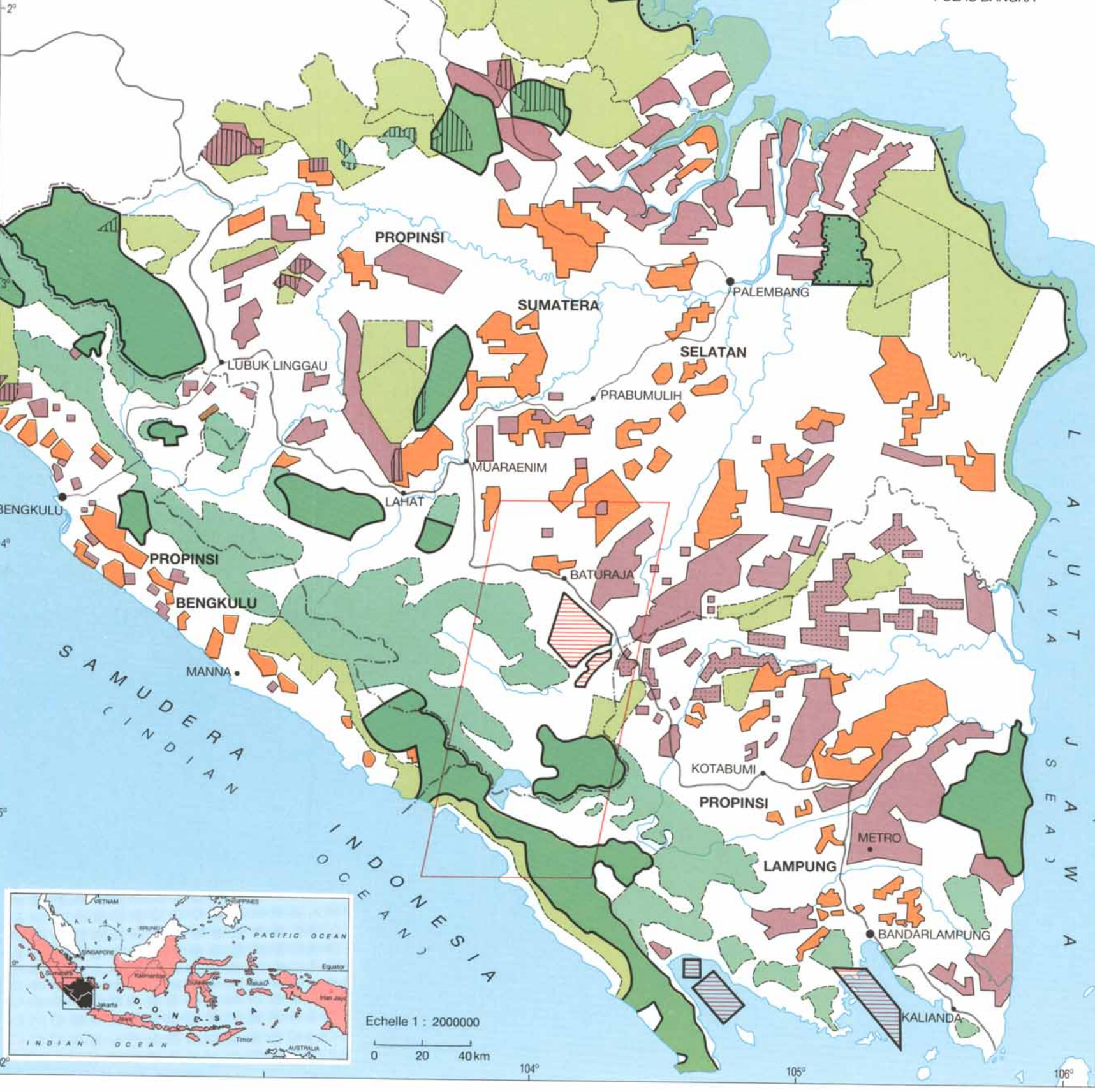


1. CONTRAINTES INSTITUTIONNELLES ET ESPACES AFFECTÉS INSTITUTIONNELS CONSTRAINTS AND LAND STATUS

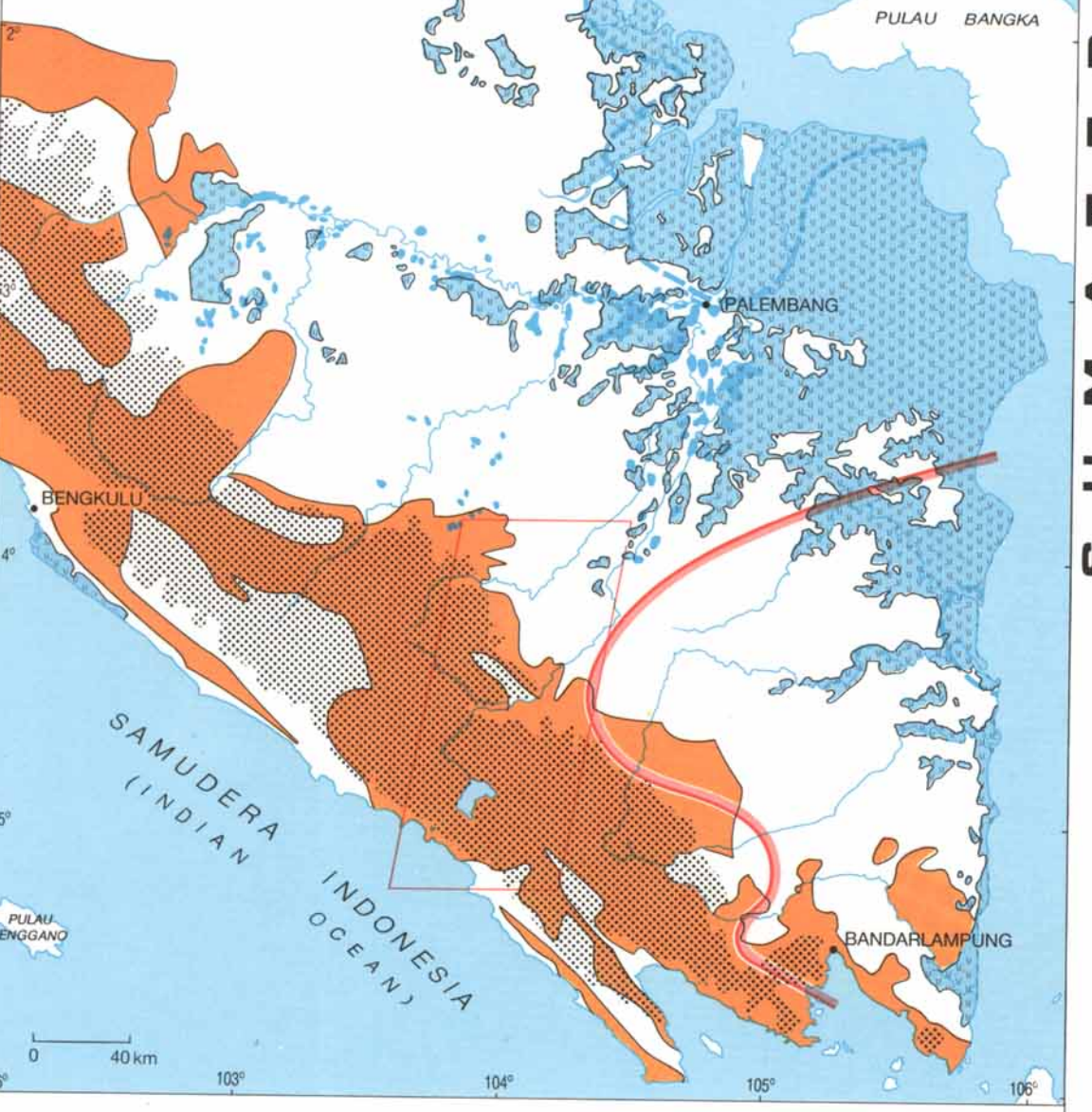


REPUBLIK INDONESIA
DEPARTEMEN TRANSMIGRASI
REPUBLIC FRANÇAISE
ORSTOM
CNRS
avec la collaboration de... in collaboration with
INDECO, INTERSYS PPT-LIPI

- NATURE DES CONTRAINTES
TYPE OF CONSTRAINTS :**
- parc national, réserve naturelle (national park, nature reserve)
 - réserve forestière et protection des bassins-versants (protected forest and conservation of catchment areas)
 - domaine militaire, terrain de manœuvre (military area)
 - lotissements de la Transmigration (Transmigration settlements)
 - Transmigration Locale "Translok" program
 - contraintes agro-économiques (agro-economic constraints):
 - concession forestière - forest claim
 - principales plantations agro-industrielles (main agro-industrial estates)
- POIDS DES CONTRAINTES
DEGREE OF CONSTRAINTS :**
- contrainte très dure, généralement respectée (very strict constraint, usually respected)
 - contrainte dure (terrain cadastré ou clôturé) (strict constraint (cadastral or enclosed area))
 - contrainte souvent contournée (bornage généralement absent) (constraint often circumvented (boundaries generally unmarked))
 - espaces litigieux, recouvrement de terrains de nature juridique différente (contested area, overlapping claims on land with unclear legal status)
 - terrain borné - marked boundaries

- SOURCES - SOURCES**
- Departemen Kehutanan (Jakarta), Kantor Wilayah Kehutanan (Bandarlampung, Bengkulu, Palembang) - Peta Dasar, Propinsi Dati / Bengkulu, Lampung, Sumatera Selatan (statut des forêts - forest status, derniers doc. disponibles - last doc. available) 1/500,000
 - Government of Republic of Indonesia, Ministry of Transmigration, Directorate general of settlement preparation, SUMATRA - Series Land Use/Forest Status - 1/250,000 - RePPPOT - 1988
 - Pemerintah Daerah Tingkat 1, Bengkulu, Lampung, Sumatera Selatan Peta Proyek Perkebunan D.I. (plantations agro-industrielles - estates) 1/500,000
 - Kantor Wilayah Kehutanan, Palembang Peta Kawasan Hutan 1/500,000 Peta Perencanaan Tanah Lokasi Perkebunan dan Transmigrasi - non date - no date
 - Kantor Wilayah Departemen Transmigrasi Prop. Bengkulu, Lampung, Sumatera Selatan, Peta lokasi pemukiman transmigrasi (cartes de localisation des programmes Transmigration - location map of Transmigration settlements) différentes échelles - several scales, 1989
 - Transmigration et migrations spontanées - Transmigration and spontaneous migrations: Sumatera, Lampung, Sumatera, ORSTOM - DEPARTEMEN TRANSMIGRASI, Jakarta-Paris 1989
 - Angkatan Bersenjata Republik Indonesia, Markas besar Tentara Nasional Indonesia - Angkatan Laut, Lokasi Daerah Lathan TNI A.L. di Propinsi Lampung, 1989
 - enquêtes de terrain - field surveys 1989-1990

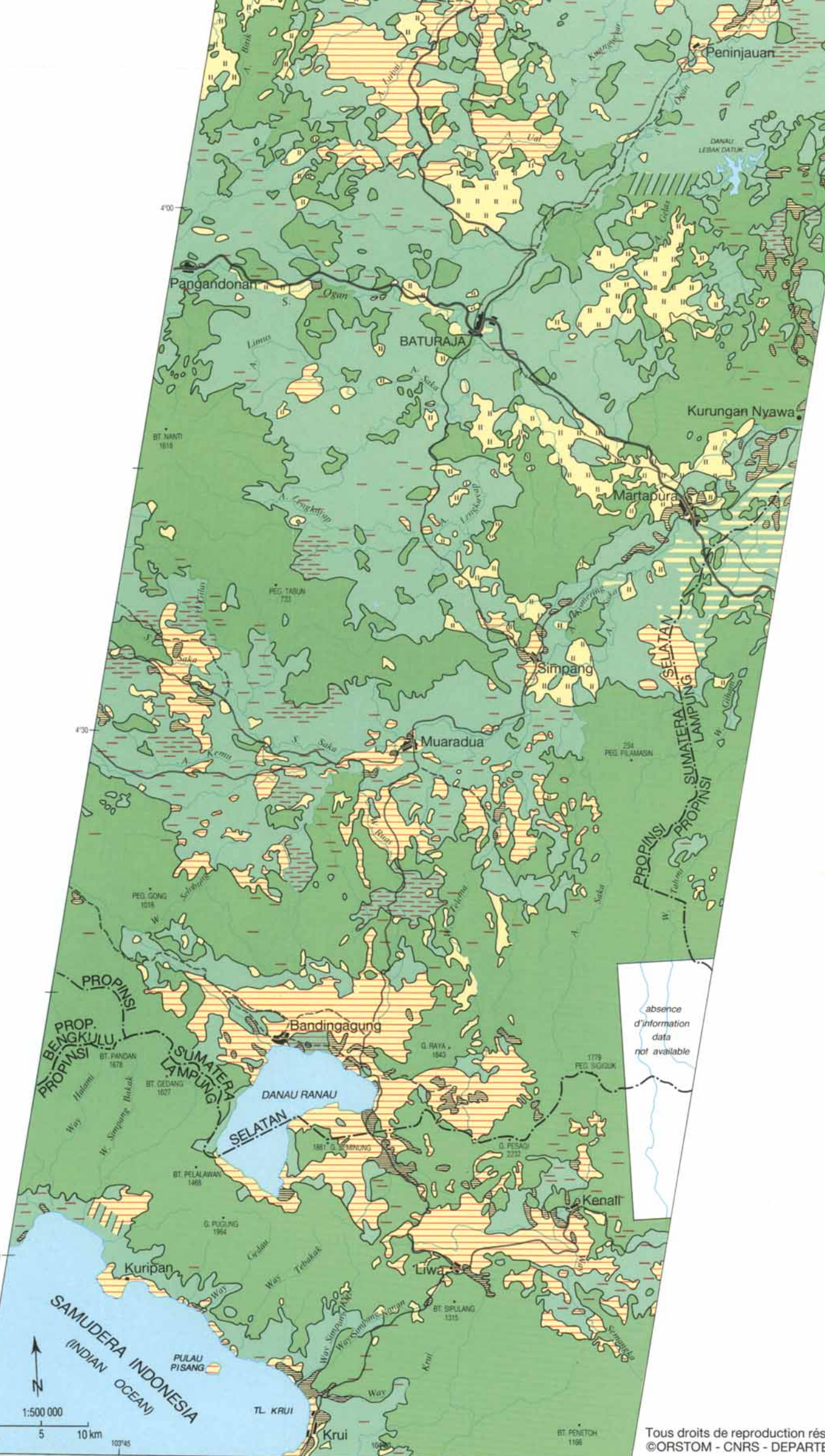
2. FACTEURS NATURELS DECISIFS MAJOR NATURAL FACTORS



- bonnes terres d'origine volcanique (latosols et andosols) (fertile land of volcanic origin (latosols and andosols))
- région marécageuse - swampy area
- région de fortes pentes, risque d'érosion si forte occupation du sol sans aménagements - steep slopes, risk of erosion if densely occupied without appropriate environmental precautions
- limite de l'influence de la marée (rivière Musi et affluents) (limit of tidal influence (pasang surut) (Musi river and tributaries))
- terres régulièrement inondées (rivière Musi et affluents) (regularly flooded areas (Musi river and tributaries))
- région à risque de déficit hydrique (saison sèche pouvant excéder deux mois) (area subject to drought (risk of dry season exceeding two months))

- SOURCES - SOURCES**
- Sholtz U., Agrarographie von Sumatra, Universität Gießen, 1988
 - Laumonier et al., Carte Internationale du tapis végétal, Sumatra Sud, International map of the vegetation, South Sumatra SEAMEO - BIOTROP, Toulouse, 1983
 - Jahjah H., Suhadi, Dural R., Peta tanah eksplorasi, Sumatera bagian selatan 1:1.100.000, Departemen Pertanian, Jakarta 1964
 - Soil Research Bureau (P.T.I.), Explanatory Booklet of the Land Unit and Soil Map, Sumatra, Bogor, 1989
 - (feuilles, sheets - Menggala, Tanjung Karang, Kotaagung, Toboali et/and Lahat, Baturaja : impression en cours, printing under process)
 - Republic of Indonesia, Ministry of Public Works, Musi River Basin study, thematic map - location map of river training and flood control works 1989
 - Cartes topographiques - topographical maps 1/50 000 JANTOP 1969 - 1976 BAKOSURTANAL, Bogor.

3. OCCUPATION DU SOL EN 1969 - LAND USE IN 1969



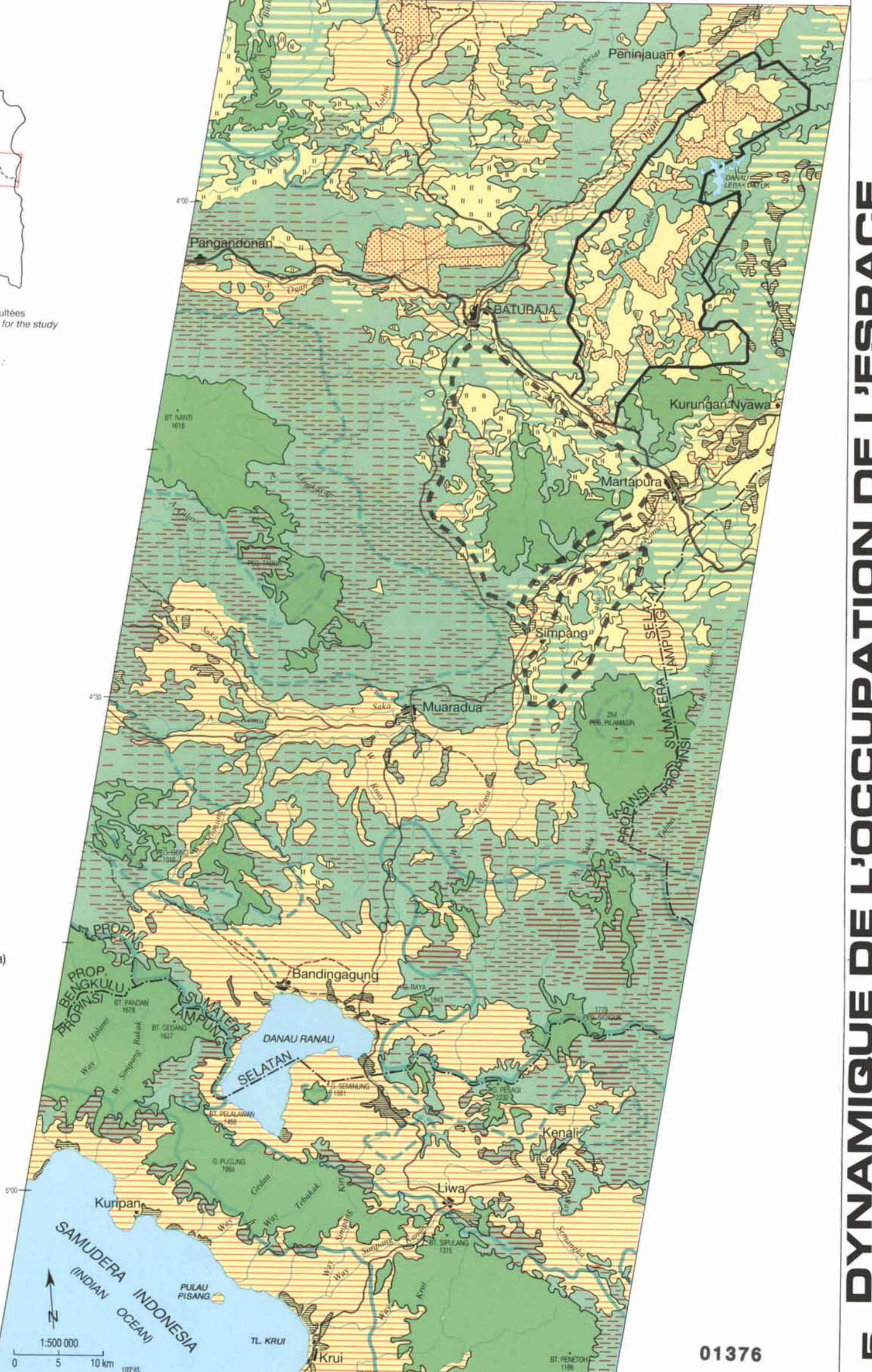
- limites des scènes SPOT qui ont pu être consultées (boundaries of SPOT satellite photos available for the study)
- scènes SPOT interprétées pour la carte : (SPOT satellite photos interpreted for the map : "land use in 1986")

- SOURCES - SOURCES**
- cartes topographiques - topographical maps 1/50 000 JANTOP 1969 - 1976 BAKOSURTANAL, Bogor, séries - series 1010 - 1011 - 1012
 - Government of Republic of Indonesia, Ministry of Transmigration, Directorate general of settlement preparation, SUMATRA - Series Land Use/Forest Status - 1/250,000 - RePPPOT - 1988, Series 1010, 1011, 1012
 - scènes SPOT - SPOT satellite photos, 278/358 - 359 - 360 - 21/07/1986
 - enquêtes de terrain - field surveys 1990
- FORMATIONS VEGETALES SPONTANÉES
NATURAL DENSE VEGETATION TYPES**
- forêt dense humide sempervirente (dense moist evergreen forest)
 - forêt inondée ou marécageuse (swamp or riparian forest)
- FORMATIONS DEGRADÉES
SECONDARY AND SHRUBBY VEGETATION**
- forêt secondaire (secondary forest)
 - mosaïque de type dérivé : recru forestier, friches à Imperata cylindrica (secondary and derived type mosaic : secondary forest and shrub savanna)
 - friches à Imperata cylindrica (shrubby savanna with Imperata cylindrica)
- ESPACES CULTIVÉS OU EN VOIE D'OCCUPATION
CULTIVATED OR PIONEER AREA**
- espaces cultivés (cultivated area):
 - plantations agro-industrielles (estates)
 - petites plantations dominantes (predominantly smallholdings)
 - cultures en sec (palawija) - dry food crops (palawija)
 - rizières - paddy fields
 - espaces en voie d'occupation - pioneer area:
 - défrichements très importants (very extensive clearings)
 - défrichements importants (clearings extensive)
 - défrichements épars (scattered clearings)
- CONTRAINTES INSTITUTIONNELLES
INSTITUTIONAL CONSTRAINTS ON SETTLEMENT**
- parc naturel (natural park) (RePPPOT 1988)
 - forêt protégée (protected forest) (RePPPOT 1988)
 - terrain de manœuvre militaire (military practice area)
 - espace affecté à la Transmigration (Transmigration project area)

carte réalisée par : by 1.2 Marc Pain 3.4 Frédéric Durand
dessin - cartographie ORSTOM - DEP. TRANSMIGRASI
drawing-cartography Jalizar, Geosum

Tous droits de reproduction réservés - All rights reserved
©ORSTOM - CNRS - DEPARTEMEN TRANSMIGRASI 1991

4. OCCUPATION DU SOL EN 1986 - LAND USE IN 1986



SUMATERA INDONESIA
DYNAMIQUE DE L'ESPACE
CONSTRAINTS ON AND EVOLUTION OF LAND USE