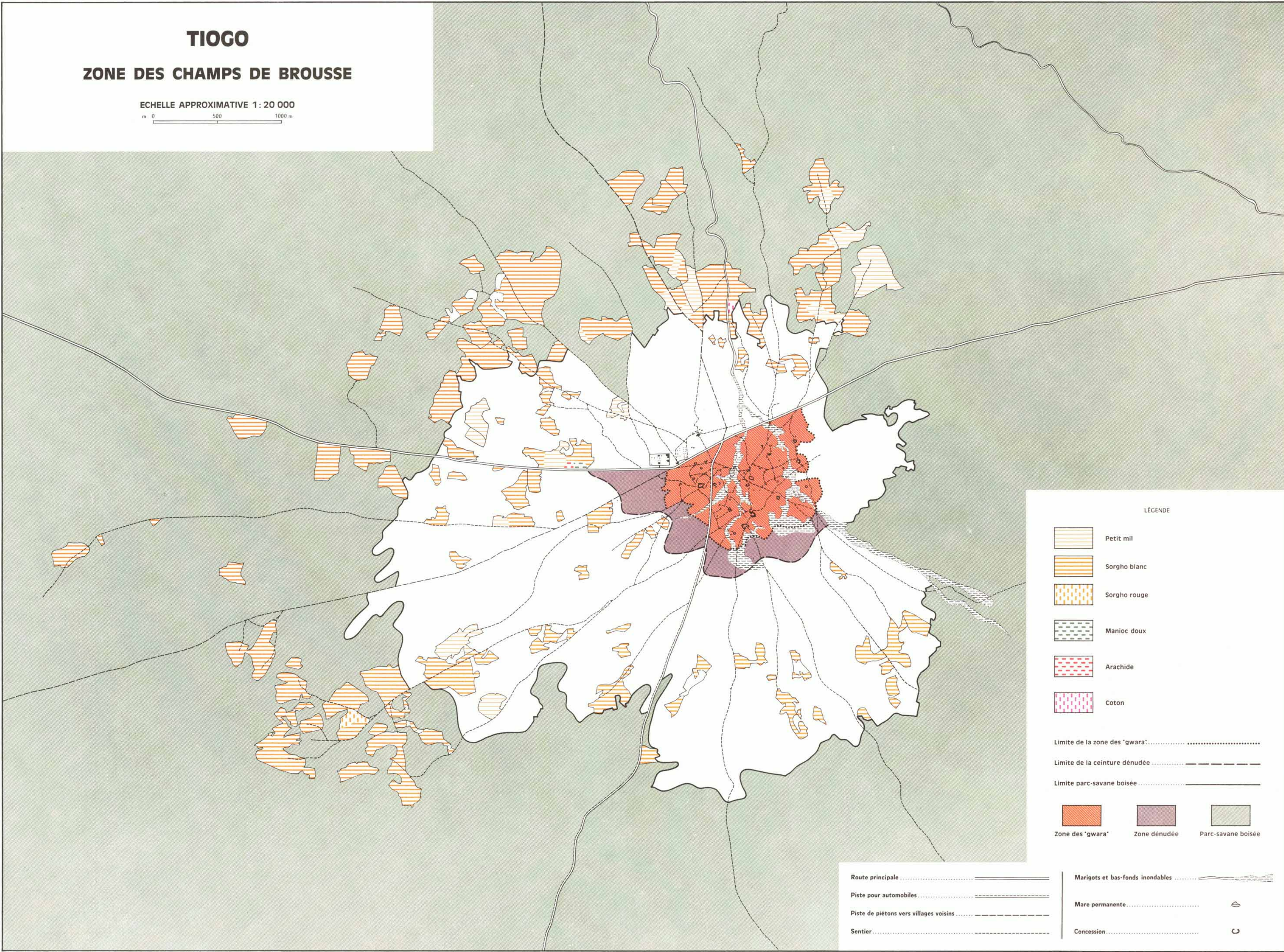








TIOGO

ZONE DES CHAMPS DE BROUSSE

ECHELLE APPROXIMATIVE 1:20 000
m 0 500 1000 m



LÉGENDE

-  Petit mil
-  Sorgho blanc
-  Sorgho rouge
-  Manioc doux
-  Arachide
-  Coton




Limite de la zone des "gwara"

Limite de la ceinture dénudée

Limite parc-savane boisée

-  Zone des "gwara"
-  Zone dénudée
-  Parc-savane boisée

-  Route principale
-  Piste pour automobiles
-  Piste de piétons vers villages voisins
-  Sentier

-  Marigots et bas-fonds inondables
-  Mare permanente
-  Concession