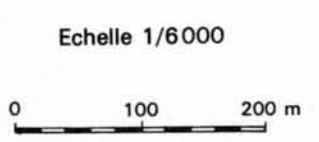
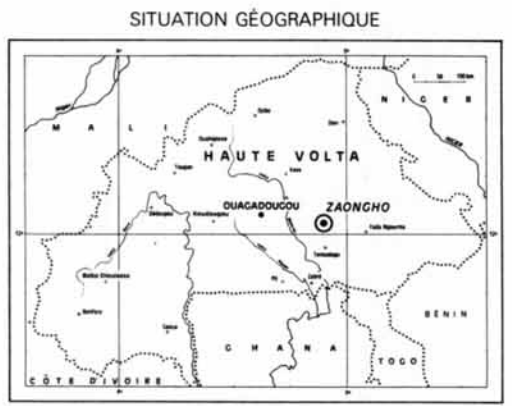
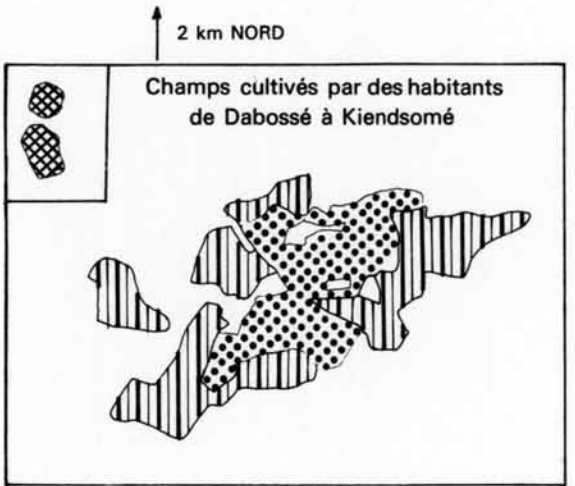


USAGE DU SOL (1967)

- | | | | |
|--|------------------------------------|--|-------------------------------|
| | Chef de village et proches parents | | Yougda-Zaongho |
| | Joanny-Gabriel | | Moussa-Paspanga |
| | Philémon | | Remiessian, Kayaba |
| | Dounipierda Dabossé | | Balma-Itenga |
| | Dounipierda Zaongho | | Balma-Koupéla |
| | Dounipierda Kiendossé | | Peul |
| | Yemdaogho Dabossé | | Etrangers de villages voisins |
| | Yemdaogho Kiendossé | | |
- Lignage Pouya**
- Lignage Naré**
- Lignage Damiba**
- Lignage Balma**



Plan levé à la planchette topographique et à la règle à écolimètre