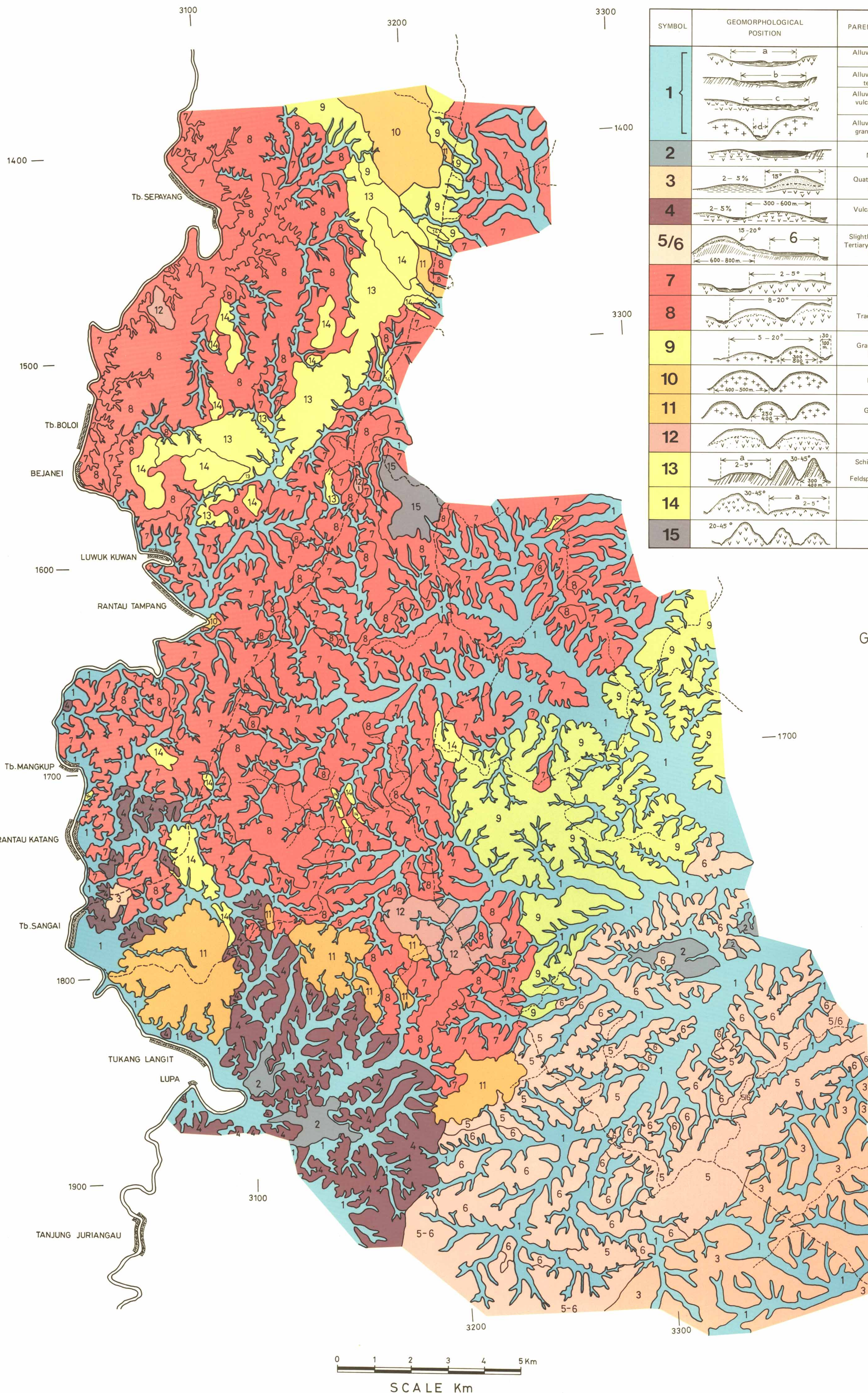


SOIL MAP

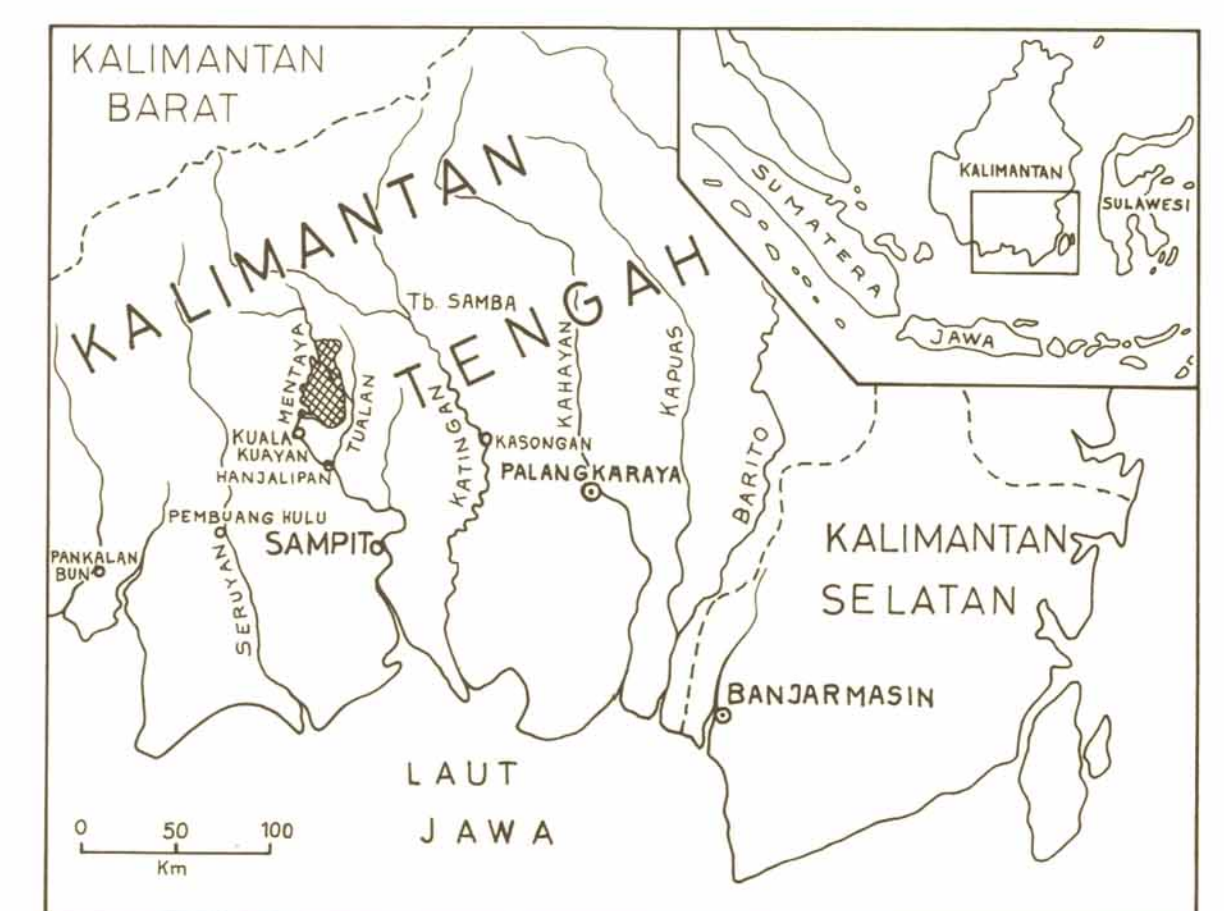
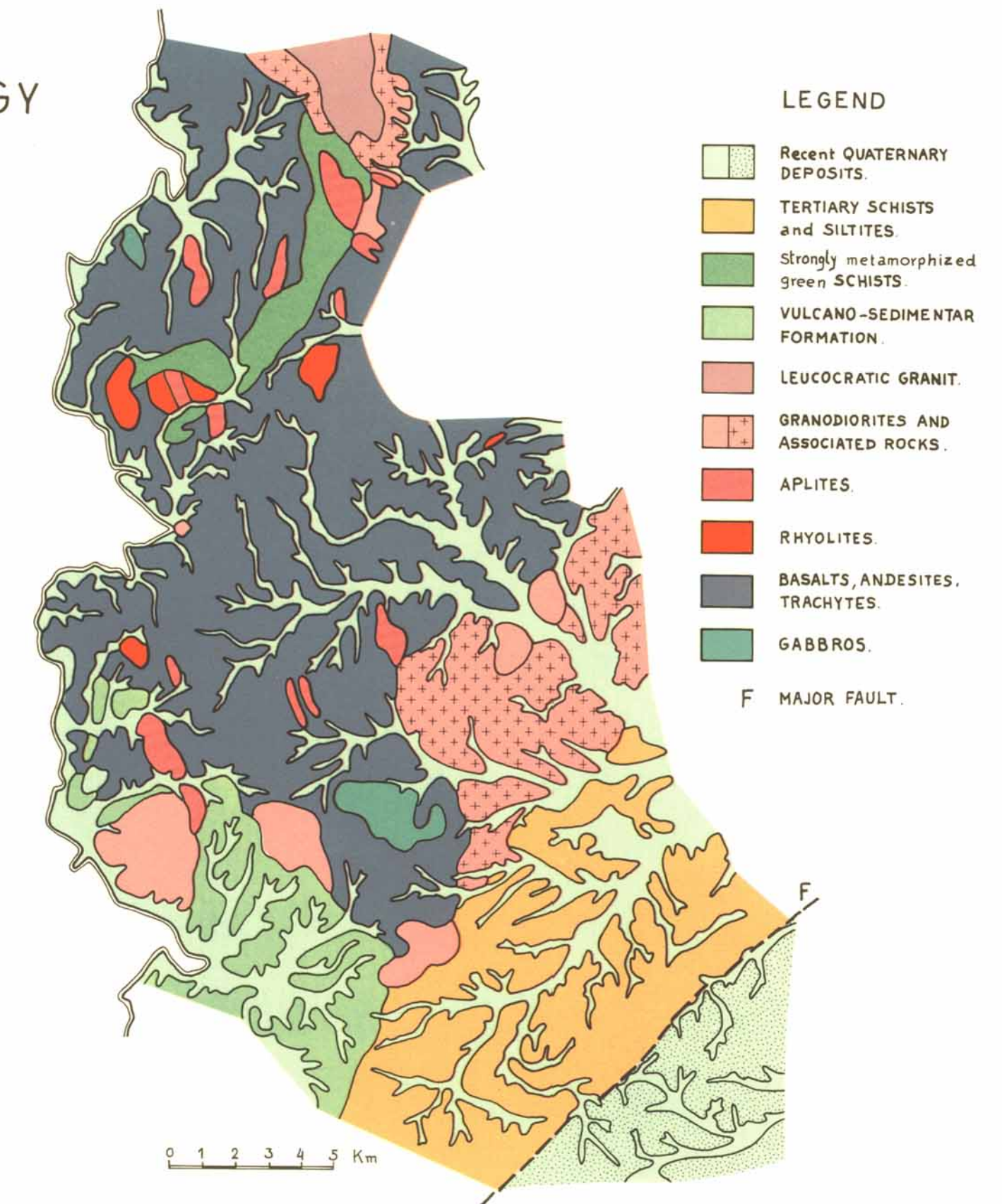
MENTAYA - EAST (CENTRAL- KALIMANTAN)



SYMBOL	GEOMORPHOLOGICAL POSITION	PARENT MATERIAL	SOILS DENOMINATION	SOIL DEPTH cm	TEXTURE top soil	TEXTURE sub soil	OTHER CHARACTERISTICS	AREA (Ha)
1		Alluvial material from basalt soils	GLEIYC FLUVISOLS	sup 120	AL	A	Overflooded during short periods by 20 to 60 cm water.	12 076
		Alluvial material from tertiary siltites	and				Overflooded for 3 to 4 months by 40 to 60 cm water.	
		Alluvial material from vulcano sedimentar formation	DYSTRIC GLEYSOLS				Shortly overflooded.	
		Alluvial material from granite derived soils	DYSTRIC FLUVISOLS					
2		Non specific	DYSTRIC HISTOSOLS	sup 120	Org	A	Overflooded more than 8 months, maximum 120 cm water.	365
3		Quaternary clays and sandy clays	GLEIYC ACRISOLS and XANTHIC FERRALSOLS (a)	sup 120	SA(a)	A	Deficient drainage, never overflooded.	1658
4		Vulcano - sedimentar deposits	XANTHIC FERRALSOLS	sup 120	AL	A	Poorly drained.	1996
5/6		Slightly metamorphosed Tertiary siltites, sandstones and clays	ORTHIC FERRALSOLS with petric phase and XANTHIC FERRALSOLS (6)	sup 120	AL	A	In type 5 : important laterite concretions layer (90%) at 150 - 400 cm, blocks up to 40 cm. In type 6 no concretions, poor drainage.	5624
7		Basalts	HUMIC FERRALSOLS hydromorphic in depth	sup 120	AL	A	Rarely laterite concretions before 70 cm, frequent mottlings after 50 cm depth. Poorly drained after 60 cm depth.	9788
8		Andesites and Trachy - andesites	HUMIC FERRALSOLS	sup 120	AL	A	Rarely concretions and mottlings before 120 cm. Well drained.	5498
9		Grano-diorite with fine quartz	ORTHIC FERRALSOLS	sup 120	ASf	A	Frequently laterite concretions (10%) after 250 cm depth. Well drained.	3594
10		Leucocratic granite	XANTHIC FERRALSOLS	sup 120	SA	AS to A	Frequently mottlings after 60 cm. Poorly drained in depth.	490
11		Grano-diorite	ORTHIC FERRALSOLS	sup 120	SA	A	Rarely mottlings before 120 cm, laterite concretions frequent from 150 - 400 cm (25%). Normally drained soils.	1424
12		Diorites and Gabbros	ORTHIC FERRALSOLS	sup 120	AL	A	Frequently gibbistic concretions (20-30%) from 170 - 250 cm. Rarely mottlings before 140 cm. Well drained.	420
13		Schiste micaschiste and Feldspathic sandstones	XANTHIC FERRALSOLS (a) and DYSTRIC CAMBISOLS	sup 120	LA	A	Mottlings (30-40%) after 50-70 cm depth. Poorly drained in depth.	1282
14		Rhyolites and Aplites	DYSTRIC CAMBISOLS and XANTHIC FERRALSOLS (a)	sup 120	Sf - L	AL	Well drained.	978
15		Basalts	HUMIC - CAMBISOLS lithic phase	30 to 120	AL	AL	No concretions, no mottlings, 20-40% stones in AC horizon. Excessively drained.	206

TOTAL : 45 400

GEOLOGY



01838

Field survey : G. SIEFFERMANN. (ORSTOM)
H. BAMBANG. (UGM) T. BUDIANTO, MUJIDIN. (PPT)
R. MARTEN, SUDARMADJI, SUDIRMAN, R. SUPOYO (DGT)

Photo interpretation and compilation by: G. SIEFFERMANN.
(Adjustment on NASA satellite image from 16 oct 79, D128 061, LANDSAT E-30590-02002)