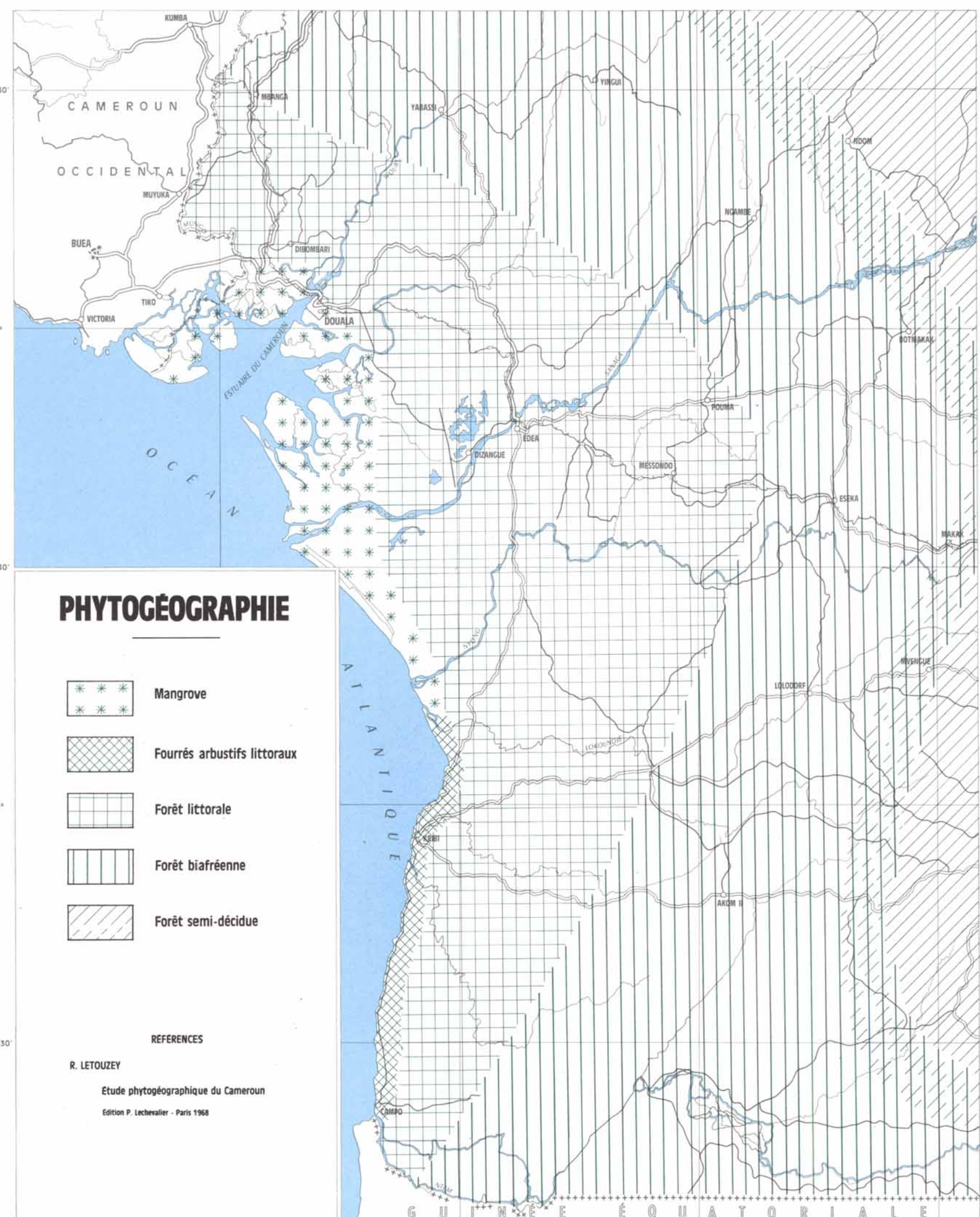
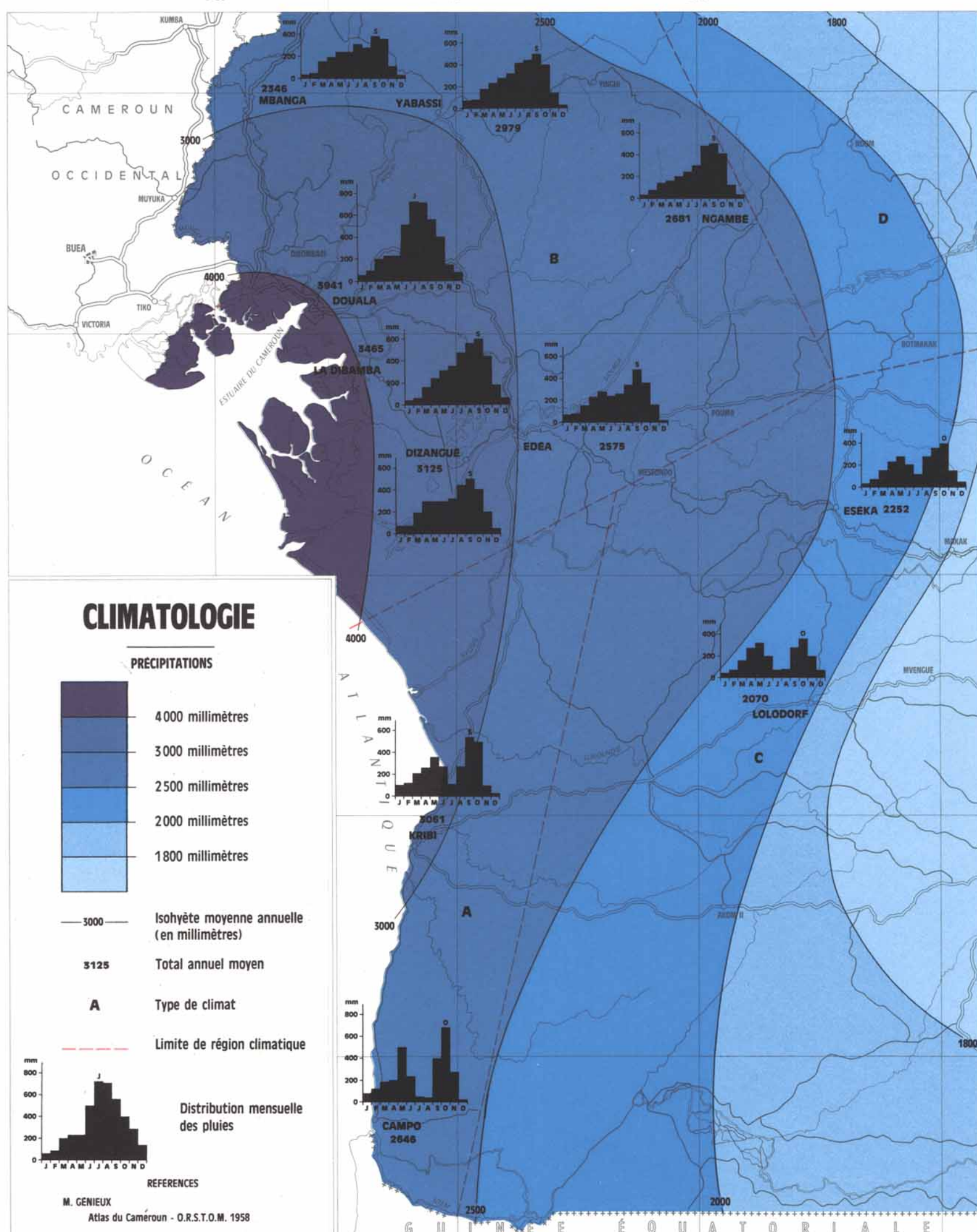
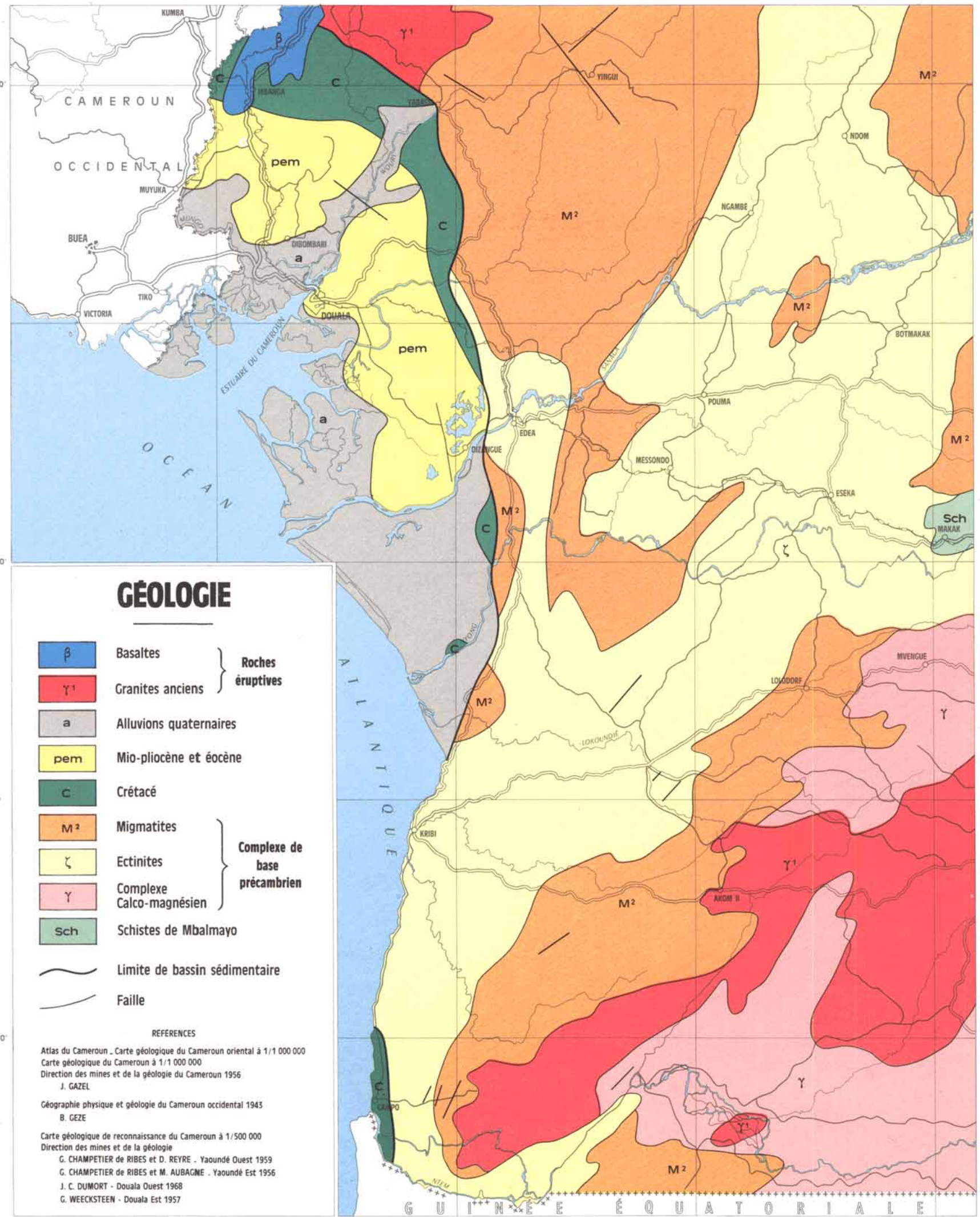
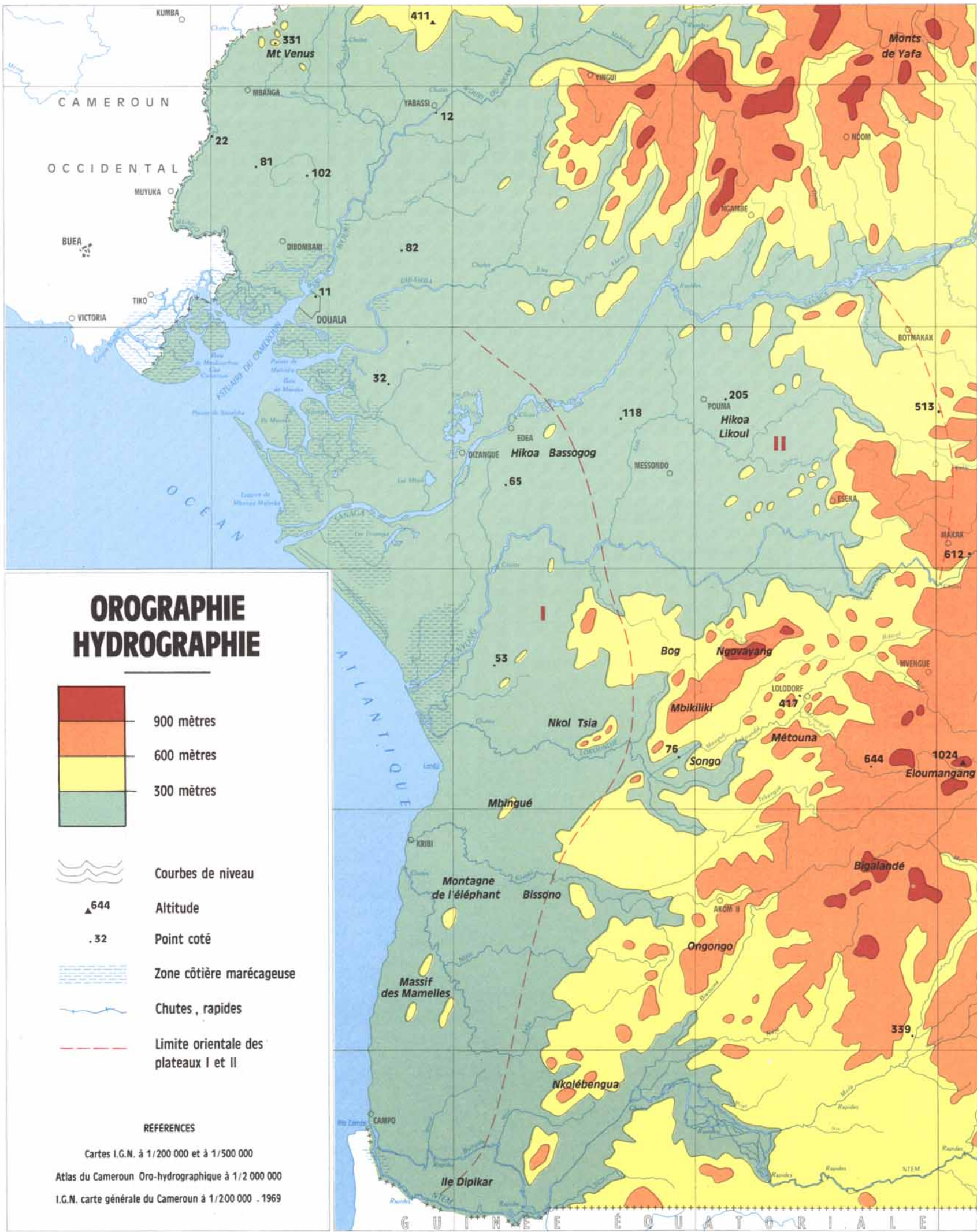
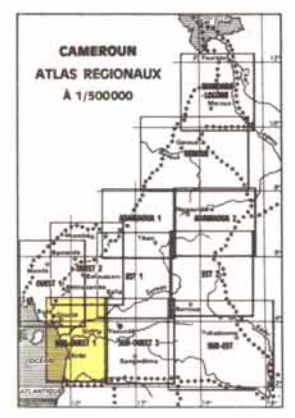


# ATLAS RÉGIONAL SUD-OUEST 1

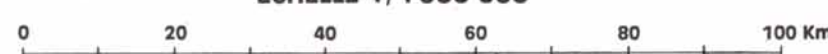
## MILIEU PHYSIQUE

par A. FRANQUEVILLE

OFFICE DE LA RECHERCHE SCIENTIFIQUE  
ET TECHNIQUE OUTRE-MER  
CENTRE DE YAOUNDE



ÉCHELLE 1/1 000 000



Fond topographique extrait des cartes à 1/200 000 et à 1/500 000 (Institut Géographique National)

02206