



ETHIOPIA - FRANCE COOPERATIVE PROGRAM
WABI SHEBELLE SURVEY

IN COLLABORATION WITH
FRENCH MINISTRY OF FOREIGN AFFAIRS
NATIONAL WATER RESOURCES COMMISSION
BCEOM, ORSTOM, EDF
IGN, B DPA

V
SOILS MAP - CARTE DES SOLS
Wabi Shebelle Basin

OCTOBER 1973

LEGEND OF THE SOILS MAP
LEGENDE DE LA CARTE DES SOLS

WEAKLY DEVELOPED SOILS SOLS PEU EVOLUES
XEROSOLS SOLS XERIQUEUES
GRAY SOILS SOLS GRIS

NON CLIMATIC SOILS SOLS D'ORIGINE NON CLIMATIQUE
ERODED SOILS SOLS D'EROSION

SOILS WITH A CALCAREOUS DIFFERENTIATION SOLS A DIFFERENCIATION CALCAIRE
WITH A MELANIC HORIZON A HORIZON MELANIQUE
WITH POWDERY LINE A CALCAIRE POWDREUX
WITH NODULES A AMAS ET NODULES

SOILS WITH A GYPSEOUS DIFFERENTIATION SOLS A DIFFERENCIATION GYPSEUSE
WITH A PALLID HORIZON A HORIZON PALLIDE
WITH POWDERY GYPSUM A GYPSE POWDREUX

BRUNIFIED SOILS SOLS BRUNIFIES
EUTROPHIC BRUNIFIED SOILS SOLS BRUNS EUTROPHES
Association of modal soils (55a) and very humic weakly developed soils (55b)
Association of modal soil (55a) and of soils peu développés humifères (55b)

FERRALLITIC SOILS SOLS FERRALLITIQUES
SATURATED SOILS SOLS SATURÉS
TYPIC SOILS SOLS TYPIQUES

FERRALLITIC SOILS SOLS FERRALLITIQUES
WEAKLY DESATURATED OR SATURATED SOILS SOLS FAIBLEMENT DESATURÉS OU SATURÉS
TYPIC SOILS SOLS TYPIQUES

HYDROMORPHIC SOILS SOLS HYDROMORPHES
MEDIUM ORGANIC SOILS SOLS MOYENNEMENT ORGANIQUES
HUMIC GLEY SOILS SOLS HUMIFIQUES A GLEY

SOILS ASSOCIATIONS ASSOCIATIONS DE SOILS

SODIC SOILS SOLS SODIQUES
SOILS WITH NON DEGRADED STRUCTURE A STRUCTURE NON DEGRADÉE
SALINE SOILS WITH SALT EFFLORESCENCES SOLS SALINES A EFFLORESCENCES SALINES

ANDOSOLS ANDOSOLS
DIFFERENTIATED SOILS SOLS DIFFERENCIÉS
SATURATED SOILS SOLS SATURÉS
CALCIMAGNETIC SOILS SOLS CALCIMAGNÉSIQUES
CARBONATED SOILS SOLS CARBONATÉS
ASSOCIATION OF MODAL BROWN CALCAREOUS SOILS (22 a) AND MODAL RENDZINA (22 b)
ASSOCIATION DE SOILS BRUNS CALCAIRES MODAUX (22 a) ET DE RENDZINES CALCAIRES (22 b)

RENZINA RENDZINES
Modal rendzina Rendzines modales

SATURATED SOILS SOLS SATURÉS
ASSOCIATION OF MODAL BROWN CALCIC SOILS (25 a) AND MODAL CALCIC RENDZINA (25 b)
ASSOCIATION DE SOILS BRUNS CALCIQUES MODAUX (25 a) ET DE RENDZINES CALCIQUES (25 b)

CALCIC RENDZINA RENDZINES CALCIQUES
Modal rendzina Rendzines modales

DIFFERENTIATED SOILS SOLS DIFFERENCIÉS
SATURATED SOILS SOLS SATURÉS

RENZINA RENDZINES
Modal rendzina Rendzines modales

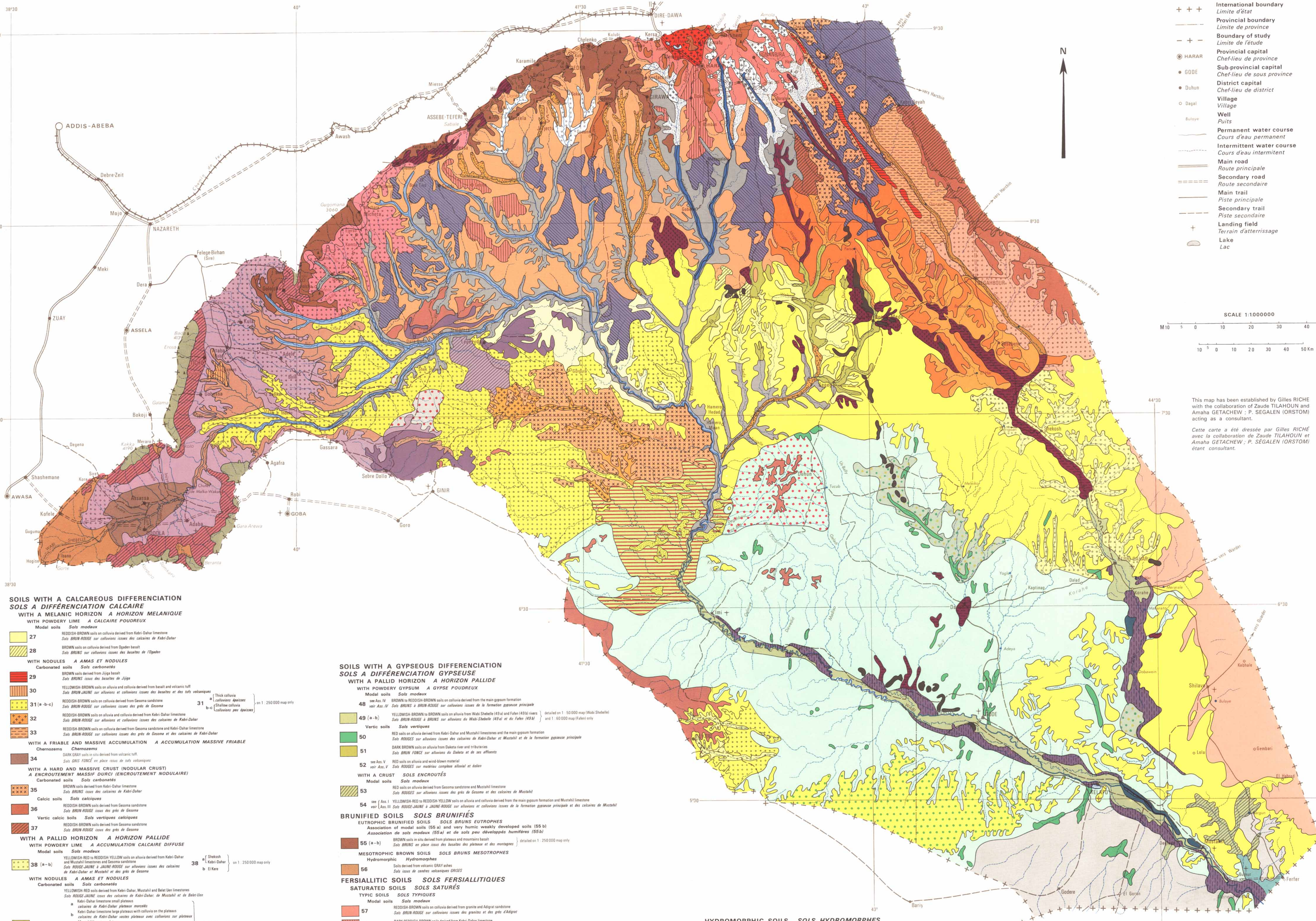
SATURATED SOILS SOLS SATURÉS
ASSOCIATION OF MODAL BROWN CALCIC SOILS (25 a) AND MODAL CALCIC RENDZINA (25 b)
ASSOCIATION DE SOILS BRUNS CALCIQUES MODAUX (25 a) ET DE RENDZINES CALCIQUES (25 b)

CALCIC RENDZINA RENDZINES CALCIQUES
Modal rendzina Rendzines modales

DIFFERENTIATED SOILS SOLS DIFFERENCIÉS
SATURATED SOILS SOLS SATURÉS

RENZINA RENDZINES
Modal rendzina Rendzines modales

International boundary Limite d'état
Provincial boundary Limite de province
Boundary of study Limite de l'étude
Provincial capital Chef-lieu de province
Sub-provincial capital Chef-lieu de sous province
District capital Chef-lieu de district
Village Village
Well Puits
Permanent water course Cours d'eau permanent
Intermittent water course Cours d'eau intermittent
Main road Route principale
Secondary road Route secondaire
Main trail Piste principale
Secondary trail Piste secondaire
Landing field Terrain d'atterrissage
Lake Lac



SCALE 1:1000000
M 10 5 0 10 20 30 40 50
K 10 5 0 10 20 30 40 50 Km

This map has been established by Gilles RICHE with the collaboration of Zoude TILAHOUN and Amaha GETACHEW, P. SEGALEN (ORSTOM) acting as a consultant.
Cette carte a été dressée par Gilles RICHE avec la collaboration de Zoude TILAHOUN et Amaha GETACHEW, P. SEGALEN (ORSTOM) étant consultant.