



ETHIOPIA - FRANCE COOPERATIVE PROGRAM
WABI SHEBELLE SURVEY

IN COLLABORATION WITH
 FRENCH MINISTRY OF FOREIGN AFFAIRS NATIONAL WATER RESOURCES COMMISSION BCEOM, ORSTOM, EDF IGN, BDPA

V
SOILS MAP - CARTE DES SOLS
Lower Valley - Basse Vallée

GODE WEST

JANUARY 1973
 MAP N° 7

SOILS FEATURES
FAVOURING IRRIGATION
APTITUDES DES SOLS
A L'IRRIGATION

1st CLASS - VERY SUITABLE SOILS FOR IRRIGATION
CLASSE I - SOLS TRES FAVORABLES A L'IRRIGATION

IA - for all tropical crops in arid zone.
 pour toutes cultures tropicales de zone aride.

- IA ds 24 25 26 27 28 29
- IA DS 23 24 25 26 27 28 29
- IB - for tropical fruit-trees, citrus, pine-apples, tomatoes (juice) vegetables, maize, sorghum, wheat, groundnuts, other oilseeds, forages (gramineae).
 pour arbres fruitiers tropicaux, agrumes, ananas, tomates (jus), cultures légumières, maïs, sorgho, blé, arachide, autres oléagineux, graminées fourragères.
- IB ds 30 31 32 33 34
- IB DS 31

IC - for sugar-cane, cotton, artificial pastures, maize, sorghum, wheat, textile fiber plants, oilseeds.
 pour canne à sucre, coton, pâturages artificiels, maïs, sorgho, blé, plantes à fibres, plantes à huile.

- IC DS m 9 10 11 12 13 14
- IC DS m 15 16 17 18 19 20 40 42
- IDA - for sugar-cane, cotton, hill rice.
 pour canne à sucre, coton, riz pluvial.
- IDA DS m 11 12 13 14 15 16 17 18 19 20 48 49

2nd CLASS - LOW SUITABILITY FOR IRRIGATION
CLASSE II - SOLS PEU FAVORABLES A L'IRRIGATION

II B - possible crops : tropical fruit-trees, citrus, pine-apples, tomatoes (juice) vegetables, maize, sorghum, wheat, groundnuts, other oilseeds.
 cultures possibles : arbres fruitiers tropicaux, agrumes, ananas, tomates (jus), cultures légumières, maïs, sorgho, blé, arachide, autres oléagineux.

- II B dm 36 37 38
- II C - possible crops : sugar-cane, cotton, artificial pastures, maize, sorghum, wheat, textile fiber plants.
 cultures possibles : canne à sucre, coton, pâturages artificiels, maïs, sorgho, blé, plantes à fibres textiles.
- II C DS m 41 42 43 44 45 46
- II C DS m 44 45 46 47 48 49
- II C DS P 50

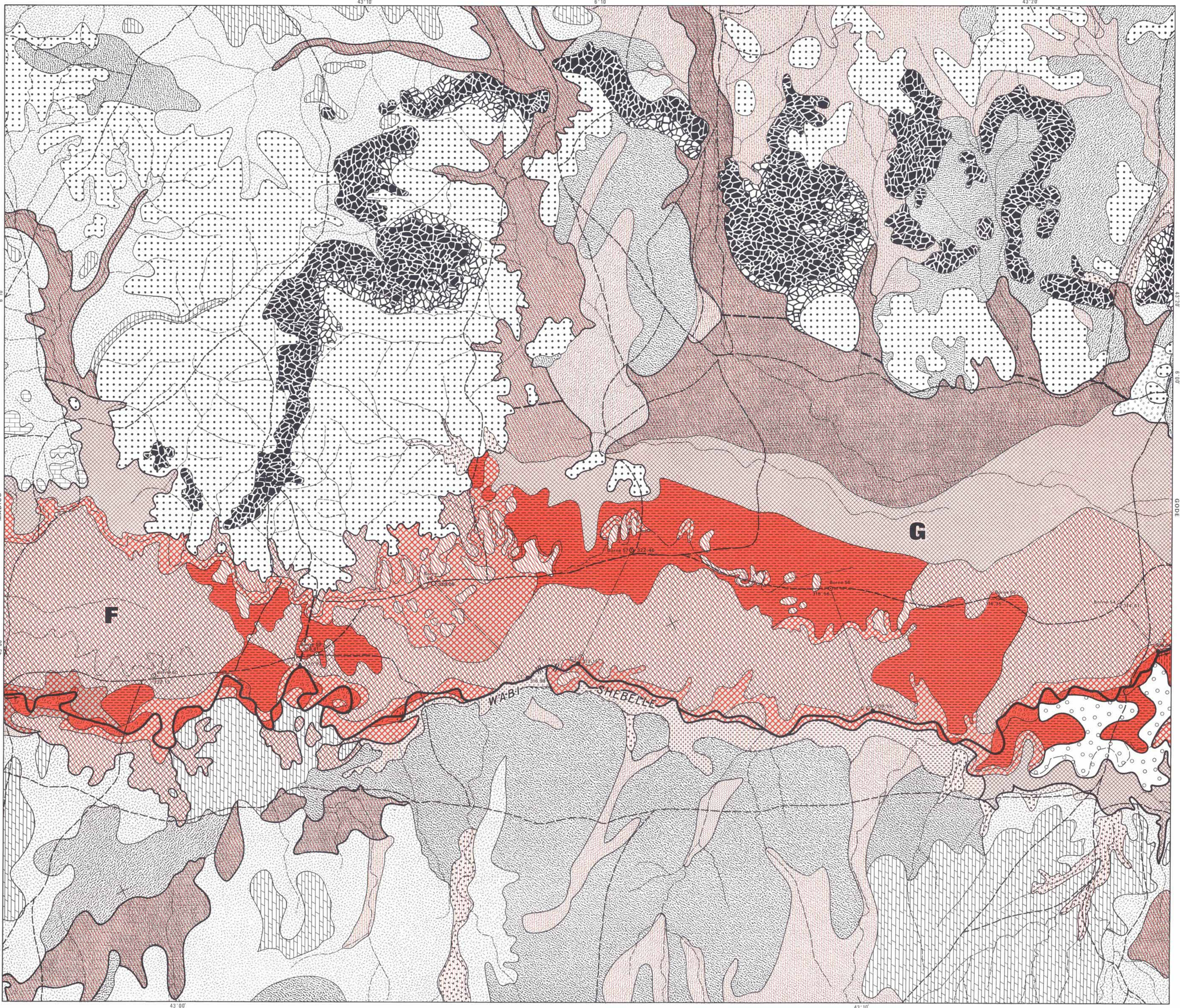
3rd CLASS - UNSUITABLE FOR IRRIGATION
CLASSE III - SOLS NON IRRIGABLES

- III Y 8
- III RU 1 2 3 4 5 6 7 8 9 10 11 12 13 14 15 16 17 18 19 20 21 22 23 24 25 26 27 28 29 30 31 32 33 34 35 36 37 38 39 40 41 42 43 44 45 46 47 48 49 50 51 52 53 54 55 56 57 58 59 60 61 62 63 64 65 66 67 68 69 70 71 72 73 74 75 76 77 78 79 80 81 82 83 84 85 86 87 88 89 90 91 92 93 94 95 96 97 98 99 100
- III RT 19 20 21 22 23 24 25 26 27 28 29 30 31 32 33 34 35 36 37 38 39 40 41 42 43 44 45 46 47 48 49 50 51 52 53 54 55 56 57 58 59 60 61 62 63 64 65 66 67 68 69 70 71 72 73 74 75 76 77 78 79 80 81 82 83 84 85 86 87 88 89 90 91 92 93 94 95 96 97 98 99 100
- III U 6
- III W 20 21

EXPLANATION OF THE SYMBOLS
SIGNIFICATION DES SYMBOLES

Factors changing the quality of the soils suitable for irrigation.
 Facteurs altérant les qualités des sols irrigables.

- d Slight degree necessary
- D Change measure to a larger scale
- D Change measure to a smaller scale
- S Weak salinity in the depth
- S High salinity affecting the whole soil
- G Two non-climatic factors favourable for irrigation
- m Groundwater level near the surface
- m Microclimate favourable for irrigation
- P Depth of the soil less than 1 m
- P Probability of salinization
- R Standard course elements
- T Deep slope
- U Superficial limestone in upper layer
- W Depth of soil less than 50 cm
- Y Dunes



Planimetric sketch executed from the mosaics of 1964-67 aerial photos.
 Esquisse planimétrique exécutée d'après les mosaïques photographiques de 1964-67.

INDEX SHEET

(M) WEST	(M) EAST	(M) WEST	(M) EAST	(M) WEST	(M) EAST
1	2	3	4	5	6

EXPLANATION OF THE SYMBOLS

- Fa** Flooded area (highly) Water level inondable
- C.E.** Water level Cote d'eau
- o** Bench-mark Boulon, borne

ABBREVIATIONS

m	Medium soil	of	of
h	Heavy soil	of	of
l	Light soil	of	of
...

LEGEND OF THE SOILS MAP
LEGENDE DE LA CARTE PEDOLOGIQUE

WEAKLY DEVELOPED SOILS SOLS PEU EVOLUES
XEROSOLS XERISQUES

NON CLIMATIC SOILS NON CLIMATIQUES

VERTISOLS AND VERTIC SOILS VERTISOLS ET SOLS VERTIQUES

SOILS WITH CALCAREOUS DIFFERENTIATION SOLS A DIFFERENCIATION CALCAIRE

SOILS WITH GYPSOUS DIFFERENTIATION SOLS A DIFFERENCIATION GYPSEUSE

SOILS WITH YELLOWISH-YELLOW ALLUVIA SUR ALLUVIONS JAUNE-ROUGE

SOILS WITH REDDISH-YELLOW ALLUVIA SUR ALLUVIONS JAUNE-ROUGE

SOILS WITH PWDERY GYPSUM MODAL A GYPSE DIFFUS

HYDRMORPHIC SOILS SOLS HYDRMORPHIQUES

SODIC SOILS SOLS SODIQUES