



ETHIOPIA - FRANCE COOPERATIVE PROGRAM
WABI SHEBELLE SURVEY

IN COLLABORATION WITH
FRENCH MINISTRY OF FOREIGN AFFAIRS
NATIONAL WATER RESOURCES COMMISSION
BCEOM, ORSTOM, EDF
IGN, B DPA

SOILS MAP - CARTE DES SOLS

Lower Valley - Basse Vallée

MADISO

JANUARY 1973
MAP N°8

SOILS FEATURES
FAVOURING IRRIGATION
APTITUDES DES SOLS
A L'IRRIGATION

1st CLASS - VERY SUITABLE SOILS FOR IRRIGATION
CLASSE I - SOLS TRÈS FAVORABLES A L'IRRIGATION

IA - for all tropical crops in arid zone
pour toutes cultures tropicales de zone aride.

Table with soil codes IA ds (24, 25, 26, 28), IA DS (23, 27, 28, 29) and their corresponding soil symbols.

IB - for tropical fruit-trees, citrus, pine-apples, tomatoes (juice) vegetables, maize, sorghum, wheat, groundnuts, other oilseeds, forages (graminae),
pour arbres fruitiers tropicaux, agrumes, ananas, tomates (jus), cultures légumières, maïs, sorgho, blé, arachide, autres oléagineux, graminées fourragères.

Table with soil codes IB ds (30, 32, 33, 34), IB DS (31) and their corresponding soil symbols.

IC - for sugar-cane, cotton, artificial pastures, maize, sorghum, wheat, textile fiber plants, oilseeds.
pour canne à sucre, coton, pâturages artificiels, maïs, sorgho, blé, plantes à fibres, plantes à huile.

Table with soil codes IC ds m (9, 10, 12, 13, 14), IC DS m (15, 17, 39, 40, 42) and their corresponding soil symbols.

ID_A - for sugar-cane, cotton, hill rice
pour canne à sucre, coton, riz pluvial.

Table with soil codes ID_A DS m (11, 16, 48, 49) and their corresponding soil symbols.

2nd CLASS - LOW SUITABILITY FOR IRRIGATION
CLASSE II - SOLS PEU FAVORABLES A L'IRRIGATION

II B possible crops : tropical fruit-trees, citrus, pine-apples, tomatoes (juice) vegetables, maize, sorghum, wheat, groundnuts, other oilseeds.
cultures possibles : arbres fruitiers tropicaux, agrumes, ananas, tomates (jus), cultures légumières, maïs, sorgho, blé, arachide, autres oléagineux.

Table with soil codes II B d m (36, 37, 38) and their corresponding soil symbols.

II C possible crops : sugar-cane, cotton, artificial pastures, maize, sorghum, wheat, textile fiber plants.
cultures possibles : canne à sucre, coton, pâturages artificiels, maïs, sorgho, blé, plantes à fibres textiles.

Table with soil codes II C DS m (41, 47), II C DSGM (44, 45, 46), II C DSP (50) and their corresponding soil symbols.

3rd CLASS - UNSUITABLE FOR IRRIGATION
CLASSE III - SOLS NON IRRIGABLES

III Y 8

Table with soil codes III R U (1, 2, 4), III R T (3, 5, 18), III U (19, 22, 35, 43) and III W (20, 21) and their corresponding soil symbols.

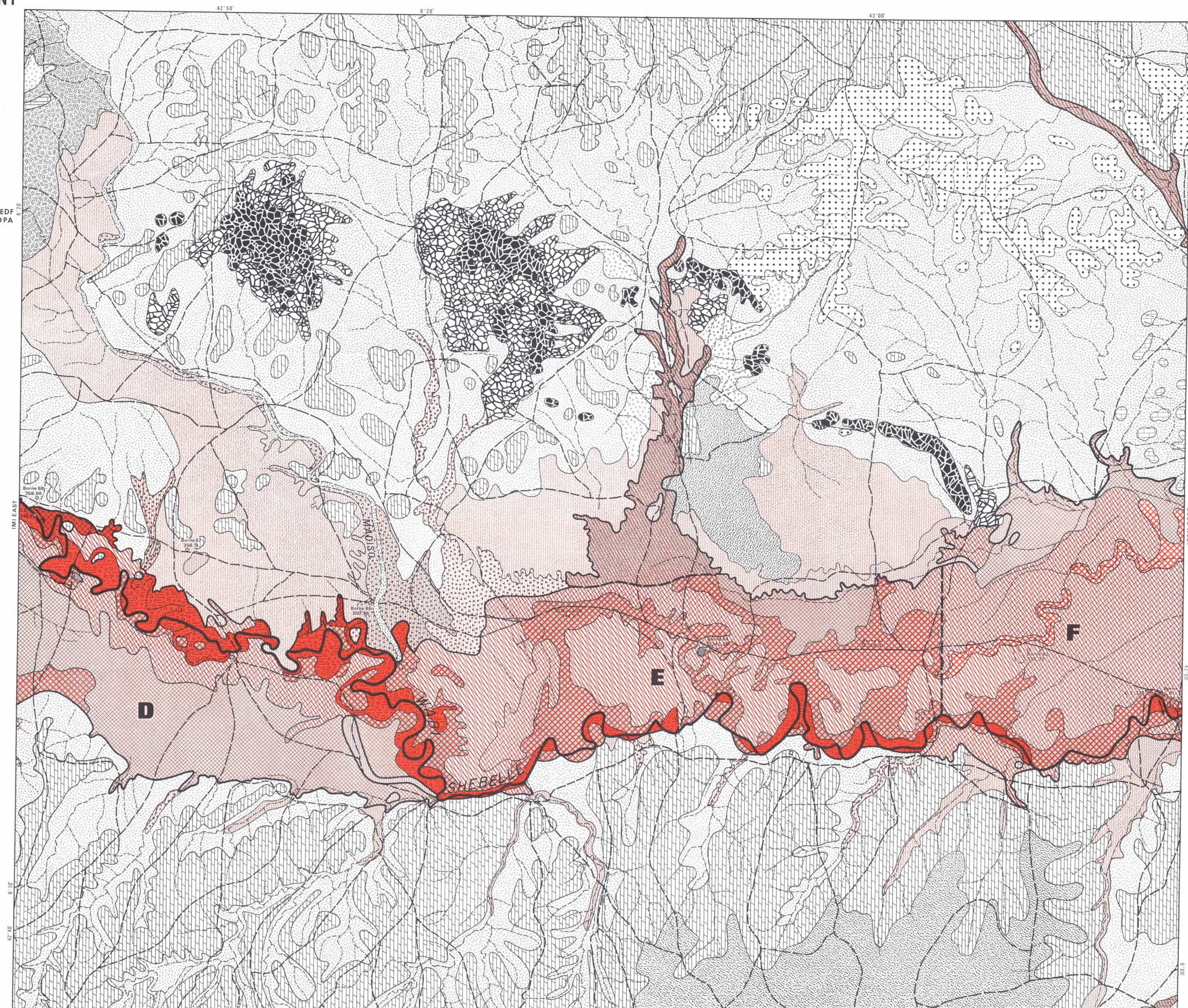
EXPLANATION OF THE SYMBOLS
SIGNIFICATION DES SYMBOLES

Factors changing the quality of the soils suitable for irrigation.
Facteurs altérant les qualités des sols irrigables.

- d Single drainage necessary
- D Drainage necessary on a larger scale
- s Water salinity on the depth
- G Fine texture affecting the water soil
- S Low free chloride content suitable for irrigation
- m Doubtful for one or more uses (difficult to irrigate)
- M Doubtful for one or more uses (difficult to irrigate)
- P Depth of soil less than 1 m

Symbols concerning non irrigable soils.
Symboles concernant les sols non irrigables.

- R Shallow coarse skeleton
- T Stone ridges
- U Superficial limestone or gypsum flags
- W Depth of soil less than 10 cm
- Y Dunes



LEGEND OF THE SOILS MAP
LEGENDE DE
LA CARTE PEDOLOGIQUE

- WEAKLY DEVELOPED SOILS SOLS PEU EVOLUES
- XEROSOLS XERIQUEUS
- NON CLIMATIC SOILS NON CLIMATIQUES
- VERTISOLS AND VERTIC SOILS VERTISOLS ET SOLS VERTIQUES
- SOILS WITH CALcareous DIFFERENTIATION SOLS A DIFFERENCIATION CALCAIRE
- SOILS WITH GYPSOUS DIFFERENTIATION SOLS A DIFFERENCIATION GYPSEUSE
- HYDROMORPHIC SOILS SOLS HYDROMORPHES
- SODIC SOILS SOLS SODIQUES