

BATHYMETRIC MAP OF THE NORTH FIJI BASIN RIDGE

between 16° 10' SUD and 21° 40' SUD

STARMER PROJECT

Heads of project : Jean-Marie AUZENDE¹, Eiichi HONZA²

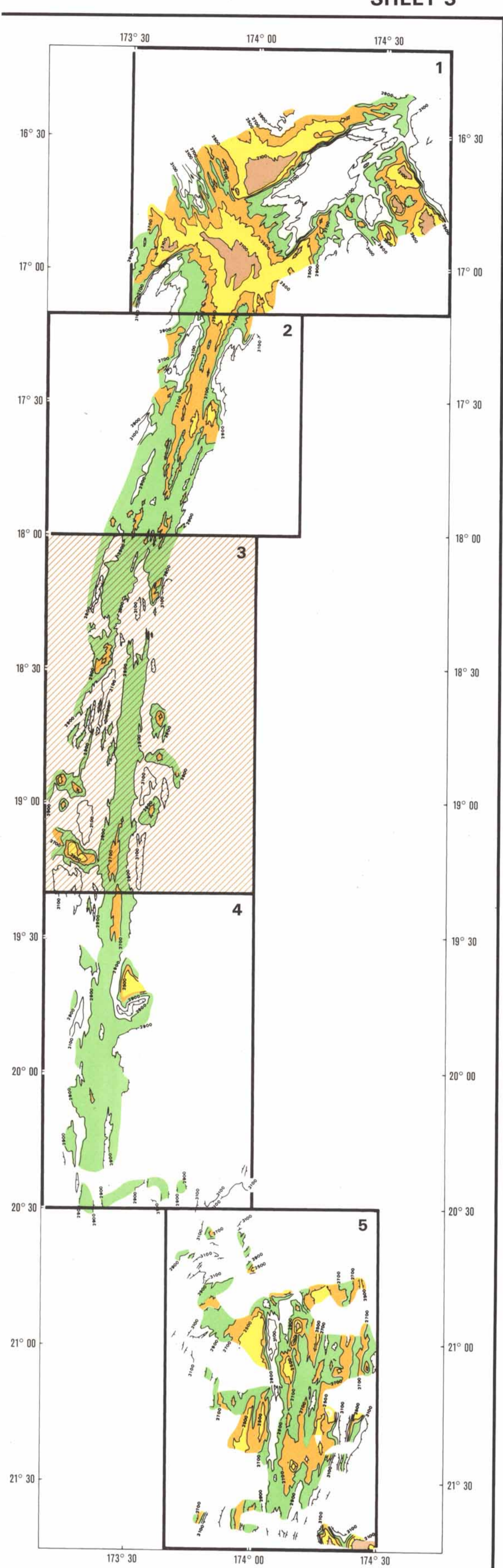
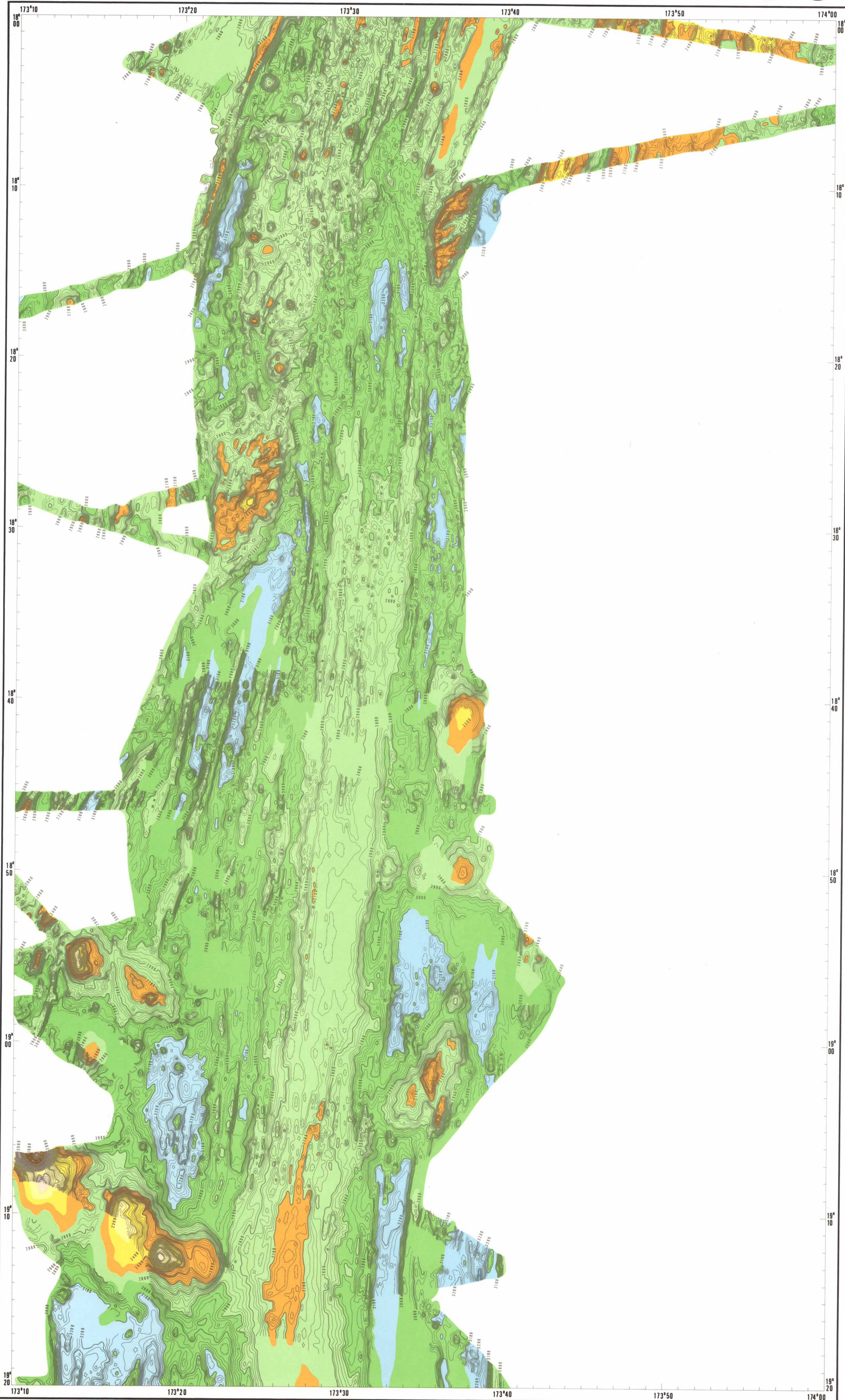
Map draughted by Jean-Pierre MAZE¹

¹GDR "GEDO", IFREMER, Centre de Brest, BP 70, 29280 PLOUZANÉ, FRANCE

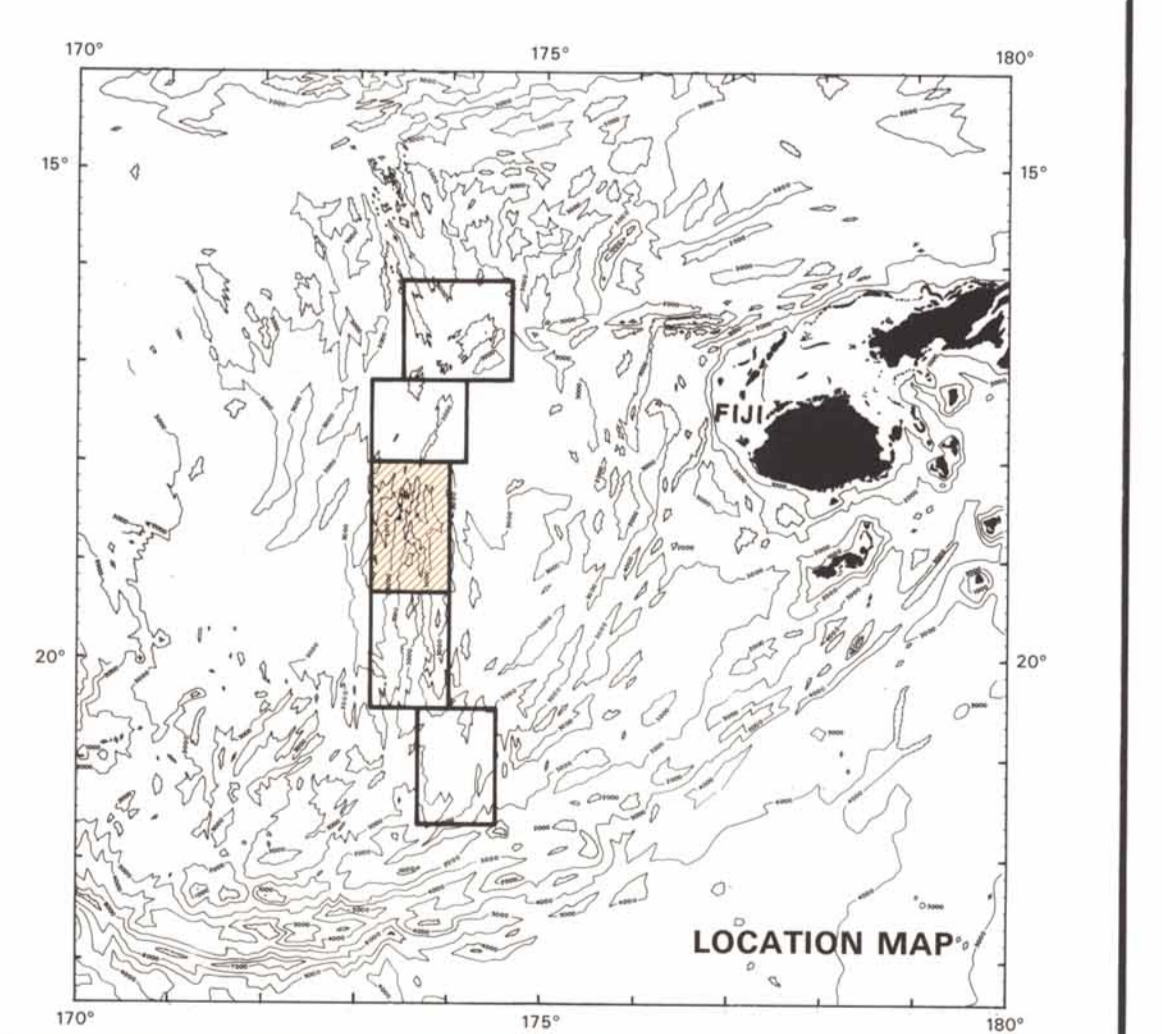
²Geological Survey of Japan, Higashi, Tsukuba 305, JAPAN.



SHEET 3



POSITION MAP

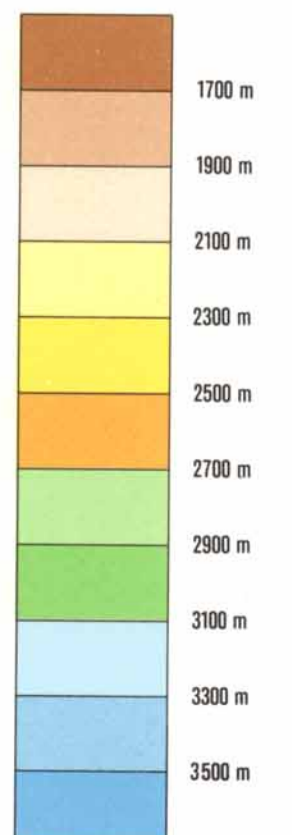


LOCATION MAP

This map should not be used for navigation

IFREMER - DIRECTION DES RECHERCHES OCÉANIQUES : DÉPARTEMENT DES GÉOSCIENCES MARINES, 1990.

10673



Scale : 1/200000 at 19° S
MERCATOR Projection
Ellipsoid W.G.S. 72 and 84
Contour interval : 20 m

The Sea-Beam data have been obtained during the Seapso 3, Kaiyo 87 and Kaiyo 88 surveys. They have been compiled at the 1/100 000 scale at 19° S. On shore ship positioning and data processing: T. Takemura, T. Uchiyama, T. Katsura and H. Hoffa.

*The STARMER project is a joint project between IFREMER and Science and Technology Agency of Japan for the general study of the rift systems in the Pacific Ocean.

DATA SOURCES

- CRUISES CHIEF SCIENTISTS**
- A - SEAPSO 3, J.-M. AUZENDE, IFREMER, Centre de Brest, B.P. 70, 29280 Plouzané, FRANCE. J.-P. EISSEN, ORSTOM, B.P. 45, Nouméa Cedex, Nouvelle-Calédonie.
 - B - KAIYO 87, J.-M. AUZENDE, IFREMER, Centre de Brest, B.P. 70, 29280 Plouzané, FRANCE. E. HONZA, Geological Survey of Japan, Higashi, Tsukuba 305, JAPAN.
 - C - KAIYO 88, J.-M. AUZENDE, IFREMER, Centre de Brest, B.P. 70, 29280 Plouzané, FRANCE. E. HONZA, Geological Survey of Japan, Higashi, Tsukuba 305, JAPAN. E. RUELLAN, CNRS Institut de Géodynamique, rue A. Einstein, Sophia Antipolis, 06560 Valbonne, FRANCE.

- PARTICIPANTS**
- A - M.-P. Caprais, P. Gente, S. Gueneley, F. Harmegnies, Y. Lagabrielle, A. Lapouille, C. Lefevre, P. Mallet, J.-P. Mazé, H. Ondreas, A. Schaaf, R. Singh.
 - B - X. Boesflug, S. Deo, J.-P. Eissen, J. Hashimoto, P. Huchon, J. Ishibashi, Y. Iwabuchi, P. Jarvis, M. Joshima, K. Kisimoto, Y. Kuwahara, Y. Lafay, T. Matsumoto, J.-P. Mazé, K. Mitsuzawa, H. Momma, T. Naganuma, Y. Nojiri, S. Ohta, K. Otsuka, Y. Okuda, H. Ondreas, A. Otsuki, E. Ruellan, M. Sibuet, M. Tanahashi, T. Tanaka, T. Urabe.
 - C - S. Dutt, J. Hashimoto, Y. Iwabuchi, P. Jarvis, D. Jollivet, M. Joshima, K. Kisimoto, T. Kawai, T. Kawamoto, Y. Lafay, T. Matsumoto, K. Mitsuzawa, T. Naganuma, J. Naka, K. Otsuka, A. Ohtsuki, B. Rao, M. Tanahashi, T. Tanaka, J.-S. Temakon, T. Urabe, T. Veilou, T. Yokokura.