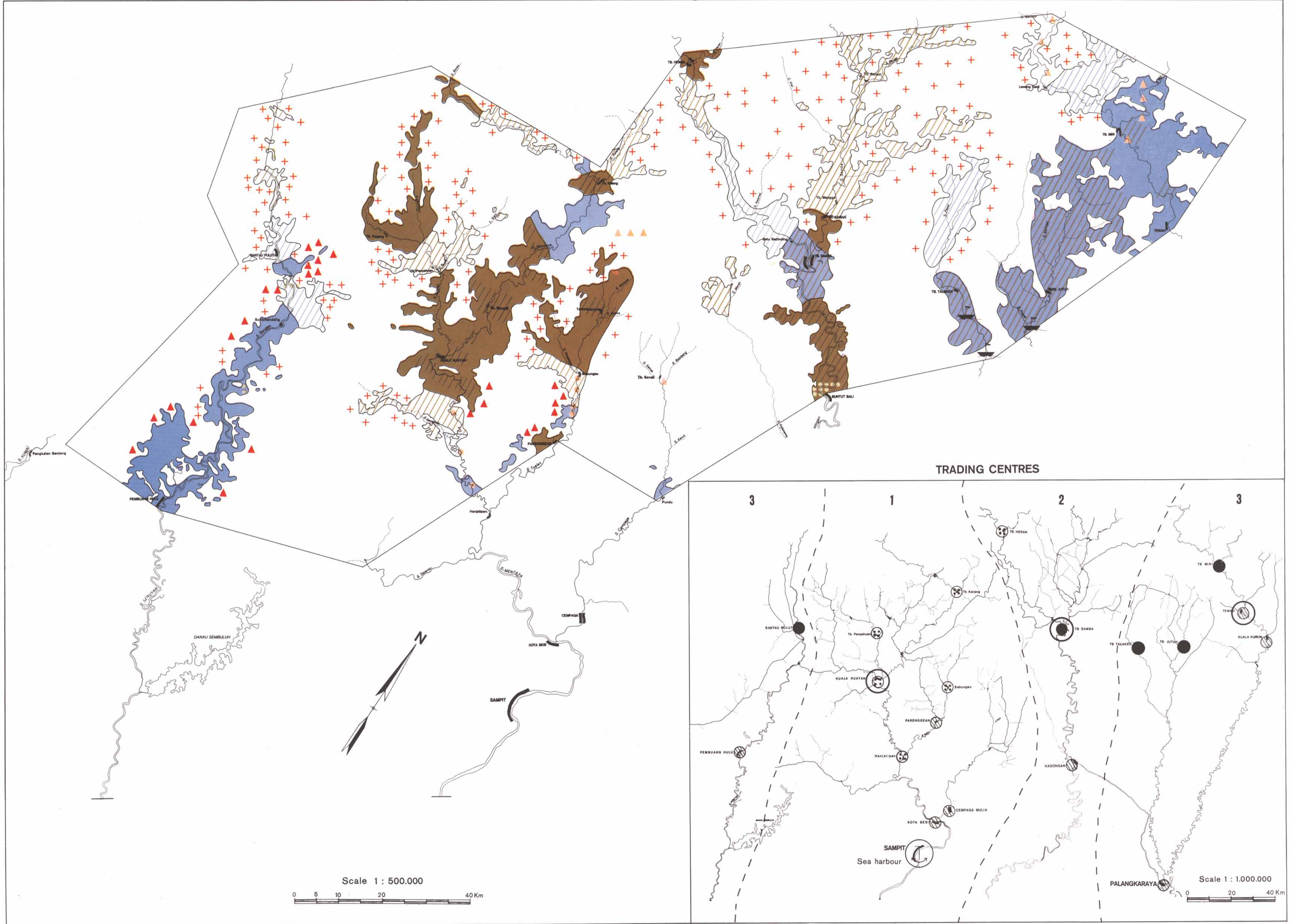


CENTRAL KALIMANTAN

D.J.T. - ORSTOM TRANSMIGRATION PROJECT PTA-44

MAIN INCOMES OF THE LOCAL POPULATION



Scale 1 : 500.000
 0 5 10 20 40 Km

Scale 1 : 1.000.000
 0 20 40 Km

LEGEND

Cash mainly/secondly provided by

- Rubber
- Rattan
- Iron-wood (ulin)
- Jelutung/Damar

- Fishing
- Amethyst-gold
- Coffee
- Local-made Pirogues

- Main centre
- Secondary centre

- Location due to rapids
- Location due to confluence
- Historical/administrative centre

- 1** Centres depending on Sampit
- 2** Centres depending on Banjarmasin
- 3** Centres depending on Banjarmasin (via Kuala Kapuas or Kuala Pembuang)