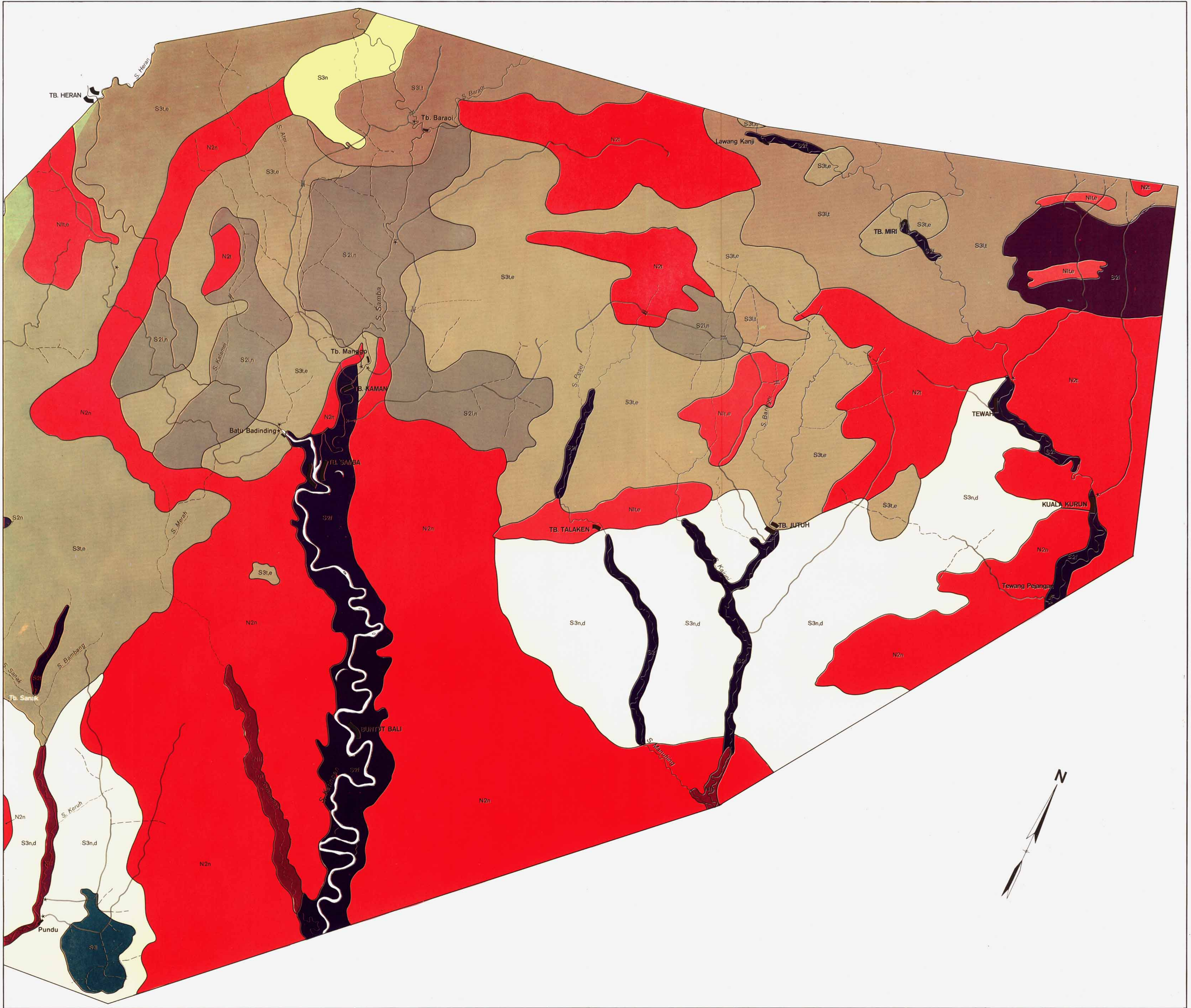


CENTRAL KALIMANTAN

D.J.T-ORSTOM TRANSMIGRATION PROJECT PTA-44

MAP OF LAND SUITABILITY FOR AGRICULTURE



Scale 1 : 250,000



LEGEND

- Main logging road
- - - Secondary logging road
- ≡ Bridge
- * Logging camp
- Mapping units boundary
- Limit of the surveyed area
- Main river
- Tributary
- KUALA KURUN : Head of kecamatan
- Pundu : Administrative village
- Tb. Samba = Tumbang Samba

Drawn by : P. BRABANT*
 Compiled by : P. BRABANT*, HUSEIN D. K.**, P. LEVANG*
 with the collaboration of T. BUDIANTO**
 * Mission ORSTOM INDONESIA
 ** CENTRE FOR SOIL RESEARCH BOGOR

Base : NASA satellite imagery and field survey
 Source : Reconnaissance soil map 1/250,000 (P. Brabant-D. Muller 1981)

LEGEND

ORDER	CLASS	SUB CLASS	MAJOR KIND OF LIMITATION	SOIL UNITS	ACREAGE		PHYSIOGRAPHY		EROSION HAZARD		DEGRADATION HAZARD	WATER REGIME		RATING OF PHYSICAL PROPERTIES		PARENT MATERIAL PROPERTIES		ORGANIC MATTER CONTENT		CATION EXCHANGE CAPACITY		LEVEL OF BASES MINERAL RESERVES (meq/100g soil)		
					ha	%	range of slope %	extension of valley bottoms %	under annual crops	under perennial crops with ground cover		Flooding hazard	Soil drainage	soil water available (mm)	from topsoil to subsoil	content size of quartz	black mineral content	in the topsoil	in the subsoil	in the topsoil	in the subsoil		in the topsoil	in the subsoil
SUITABLE	HIGHLY SUITABLE	NONE			0	0																		
	MODERATELY SUITABLE	S2 f	occasional flooding	fluviol, cambisol and gleyol from silty clay deposits	59,185	2,66	0 - 3	100 alluvial valley	negligible	negligible	negligible	periodical fluctuating river in spate < 1 week	medium fluctuating waterstable	50 - 60	175 or more waterstable	high to medium	high content fine	very low	5 - 8.5 locally 12 - 15	1.2 - 1.6	0.7 - 0.9	15 - 25 locally 35	5 - 10	high > 20 meq OM/PM
		S2 n	level of mineral reserves	humic ferralsol, dystic gleyol from basic rocks	80,000	3,60	5 - 15	15 - 25	moderate	negligible to slight	slight		rapid to medium	50 - 60	150 to 175	very high to high	low to very low	high	4 - 6	1.4 - 1.8	0.8 - 1.0	12 - 18	6 - 10	generally low 5 - 12 meq OM/PM
		S2 i	narrow valley bottom	humic ferralsol, dystic gleyol from basic rocks	56,925	2,56	10 - 20	10 - 15		slight	negligible		very rapid	50 - 60	150 to 175	high to medium	low content medium to fine	high to medium	4 - 6	1.4 - 1.8	0.8 - 1.0	12 - 18	6 - 10	rarely high 15 - 25 meq OM/PM
	MARGINALLY SUITABLE	S2 ln	narrow bottom valley low fertility	ferriol and gleyol from acidic rocks, humic acric ferralsol from basic rocks	117,170	5,26	10 - 25	5 - 15	severe	slight to moderate	slight	none	rapid			high to medium	low content medium to fine	high to medium	4 - 6	1.4 - 1.8	0.8 - 1.0	12 - 18	6 - 10	rarely high 15 - 25 meq OM/PM
		Sg 1t	narrow valley bottom slope	humic ferralsol from basic rocks	159,995	7,19	15 - 30	less than 5 locally 10 - 25		slight to moderate	negligible		very rapid			very high	low to very low	high	7 - 10	1.5 - 3	1.0 - 2.0	15 - 30 locally 30 - 40	6 - 12 locally 20 - 25	low to medium 8 - 15 O.M. locally high > 20 meq O.M./PM
	NOT SUITABLE	S3 te	slope erosion hazard	xanthic ferralsol from acidic rocks, from micaceous shale	522,318	23,5	20 - 30	5 - 10	very severe	moderate	moderate		rapid to medium	45 - 55	140 to 170	high to medium	generally high coarse to medium	generally low				8 - 12	3 - 6	low 5 - 12 meq OM/PM locally high 20 - 40 meq OM/PM
		S3 n	low fertility	ferriol from kaolinitic shale	25,750	1,16	8 - 20		moderate to severe	moderate	moderate		medium to slow percolation waterstable	30 - 40	110 to 130	low to very low	low to medium content fine	very low to null	3 - 5	0.7 - 0.9	0.4 - 0.6			low 7 - 10 meq OM/PM
		S3 nd	very low fertility degradation hazard	acriol from sandstone	460,700	20,7	3 - 20	10 - 15	severe to moderate	severe	severe	periodical in the valley bottoms < 2 days	medium to slow percolation waterstable	30 - 40	110 to 130	low to very low	high content coarse	very low to null				5 - 7	2.5 - 4.0	very low 4 - 8 meq OM
	NOT SUITABLE	CURRENTLY NOT SUITABLE	N1 f	semi permanent flooding	historical and gleyic fluviol from kaolinitic clay deposits	53,500	2,40	0 - 3	100 alluvial valley	negligible	negligible	negligible	very high > 6 months	very slow permanent or semi permanent waterable	50 or more	waterable	medium to low	low content very fine	very low to null	7 - 12	rd	rd	15 - 25	2 - 7
PERMANENTLY NOT SUITABLE		N1 te	slope erosion hazard	xanthic humic ferralsol	209,507	9,40	more 30	less than 5	extreme	severe	slight	none	rapid	45 - 55	140 to 170	high to medium	variable often high to medium	generally low	3 - 5	0.7 - 1.0	0.7E	generally 8 - 12	generally 3 - 6	generally low locally high
NOT SUITABLE	PERMANENTLY NOT SUITABLE	S2n	very low fertility	podzol from sandstone	479,940	21,6																		
	PERMANENTLY NOT SUITABLE	S2t	slope	ferriol and cambisol in the mountainous areas																				