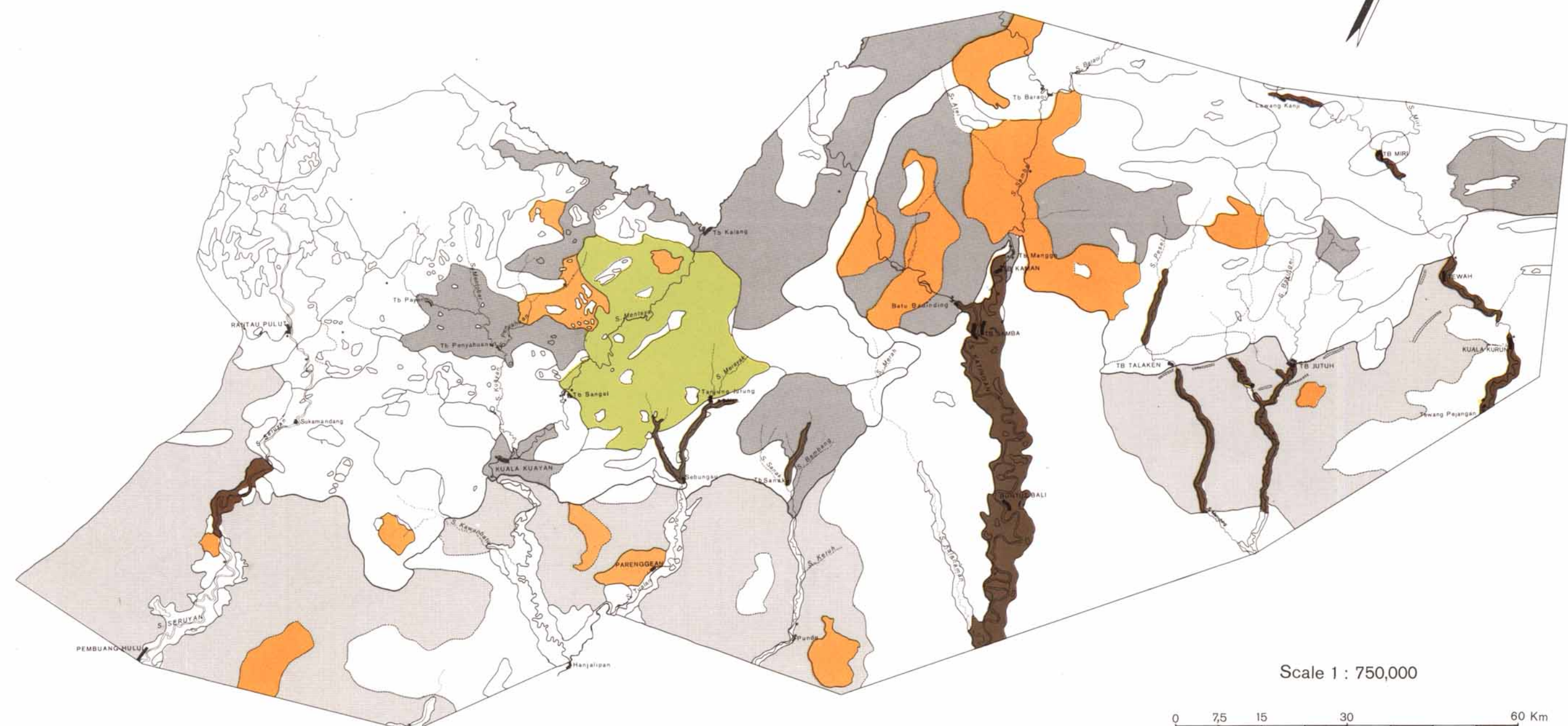


**D. LAND SUITABILITY FOR COFFEE OR PEPPER PLANTATIONS**  
(*Coffea canephora - Piper nigrum*)

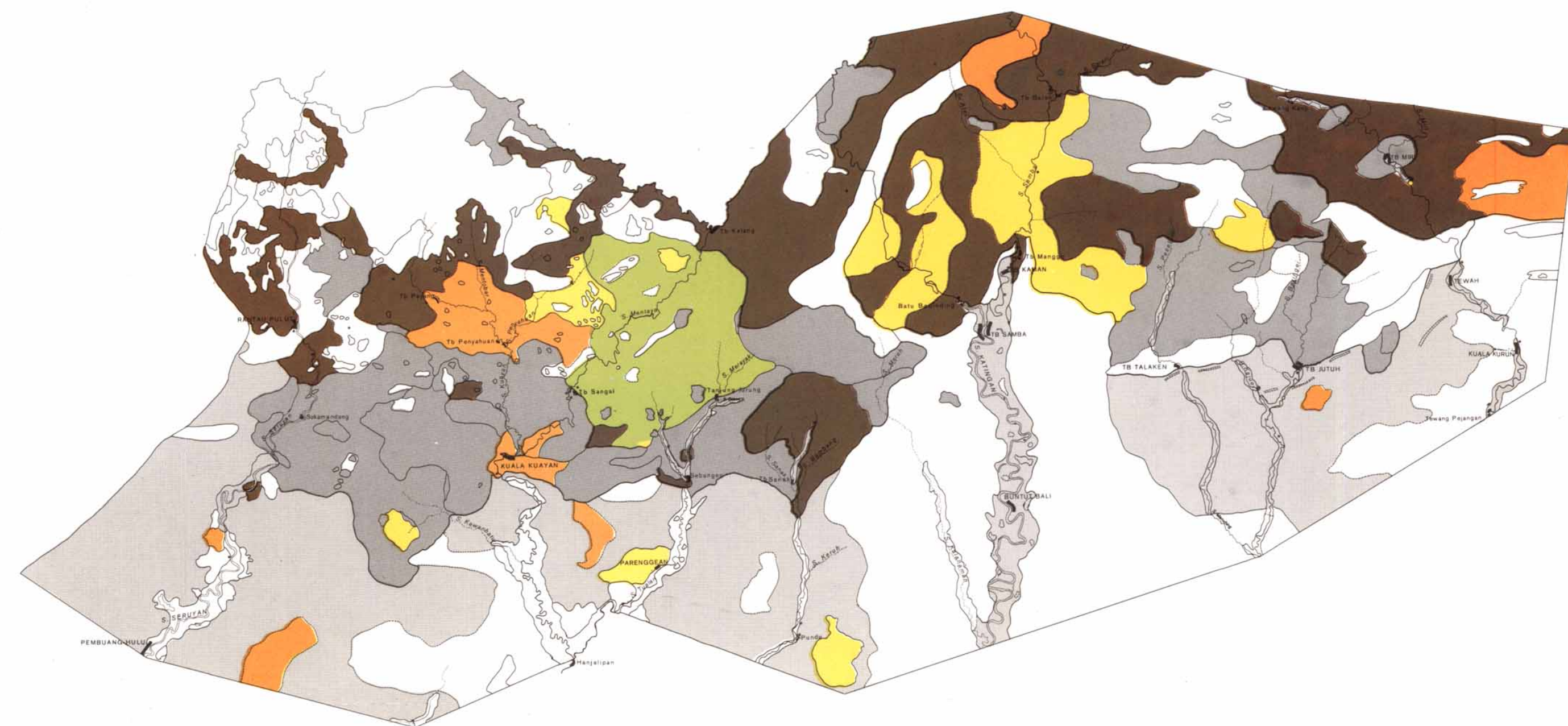
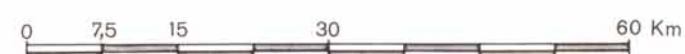
- S<sub>1/2</sub> Highly to moderately suitable. Moderate slopes (8 - 15 %) and rather good soil fertility.
- S<sub>2</sub> Moderately suitable. Same soil fertility as S<sub>1/2</sub> but steeper slopes
- S<sub>2/3</sub> Moderately to marginally suitable. Steep slopes (20-30%) but rather good soil fertility.
- S<sub>3</sub> Marginally suitable. Gentle to rather steep slopes (3-20%) but marginal soil conditions for coffee or pepper plantations (low fertility or hydromorphy).
- N Not suitable for coffee or pepper plantations. Too steep slopes or very low fertility or flooded alluvial valleys.



**E. LAND SUITABILITY FOR OIL PALM PLANTATIONS**

- S<sub>1/2</sub> Highly to moderately suitable. Moderate slopes (8-15 %) and rather good soil fertility.
- S<sub>2</sub> Moderately suitable. Moderate slopes but lower soil fertility than S<sub>1/2</sub>.
- S<sub>2/3</sub> Moderately to marginally suitable. Nearly flat but hydromorphic soils. Highly suitable if drained.
- S<sub>3/2</sub> Marginally to moderately suitable. Gentle to moderate slopes (3-15 %) but strongly leached sandy soils.
- S<sub>3</sub> Marginally suitable. Rather steep slopes (15 - 20 %).
- N Not suitable for oil palm plantations. Slopes over 20 % or flooded alluvial valleys or podzols.

Scale 1 : 750,000



**F. LAND SUITABILITY FOR COCONUT PLANTATIONS**

- S<sub>1/2</sub> Highly to moderately suitable. Moderate slopes (8-15%) and rather good soil fertility.
- S<sub>2/1</sub> Moderately to highly suitable. Moderate slopes but lower soil fertility than S<sub>1/2</sub>.
- S<sub>2</sub> Moderately suitable. Steeper slopes than S<sub>2/1</sub> and same fertility or same slopes but lower fertility.
- S<sub>2/3</sub> Moderately to marginally suitable. Steep slopes (20-30%) and good fertility or rather steep slopes (15-25%) but lower fertility.
- S<sub>3/2</sub> Marginally to moderately suitable. Gentle slopes but very low fertility or hydromorphic soils, (highly suitable if drained).
- S<sub>3</sub> Marginally suitable. Steep slopes (20-30%) but lower soil fertility than S<sub>2/3</sub>.
- N Not suitable for coconut plantations. Too steep slopes or flooded alluvial valleys or podzols.

Hydromorphic soils of the different soil-units are not considered in this land suitability  
Non hydromorphic soils of the alluvial valleys generally highly suitable are not considered in this land suitability