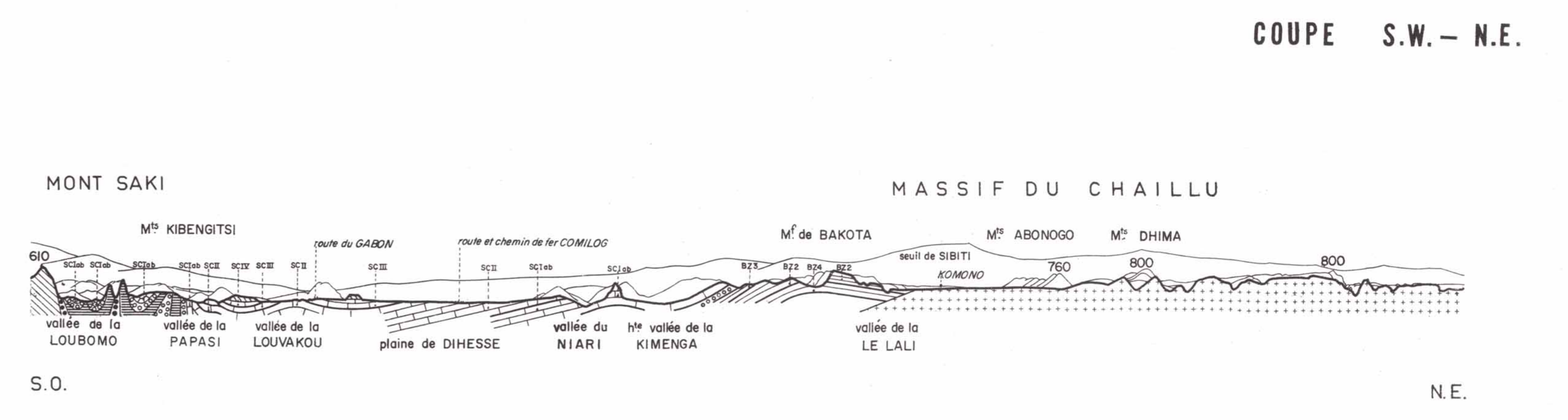
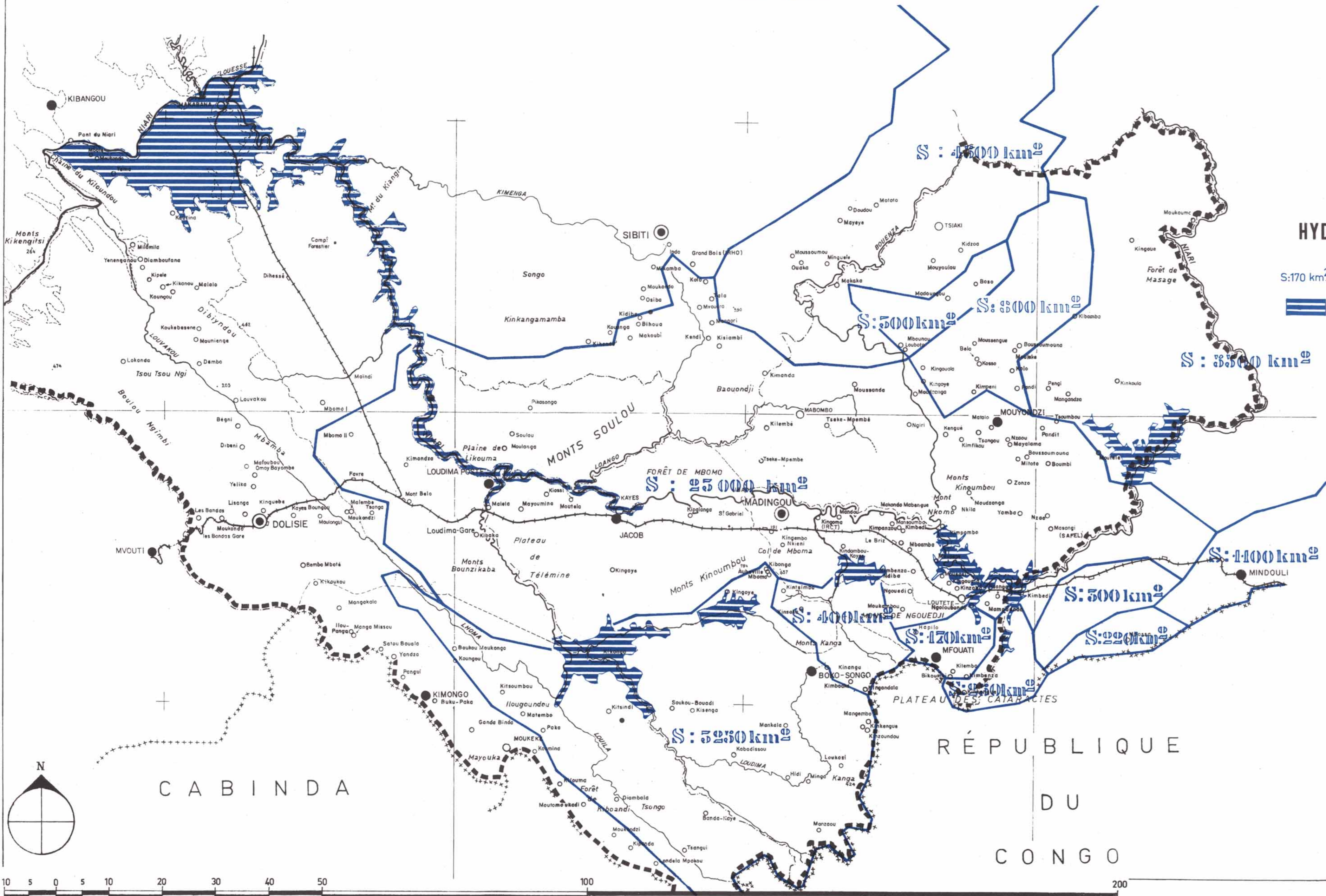
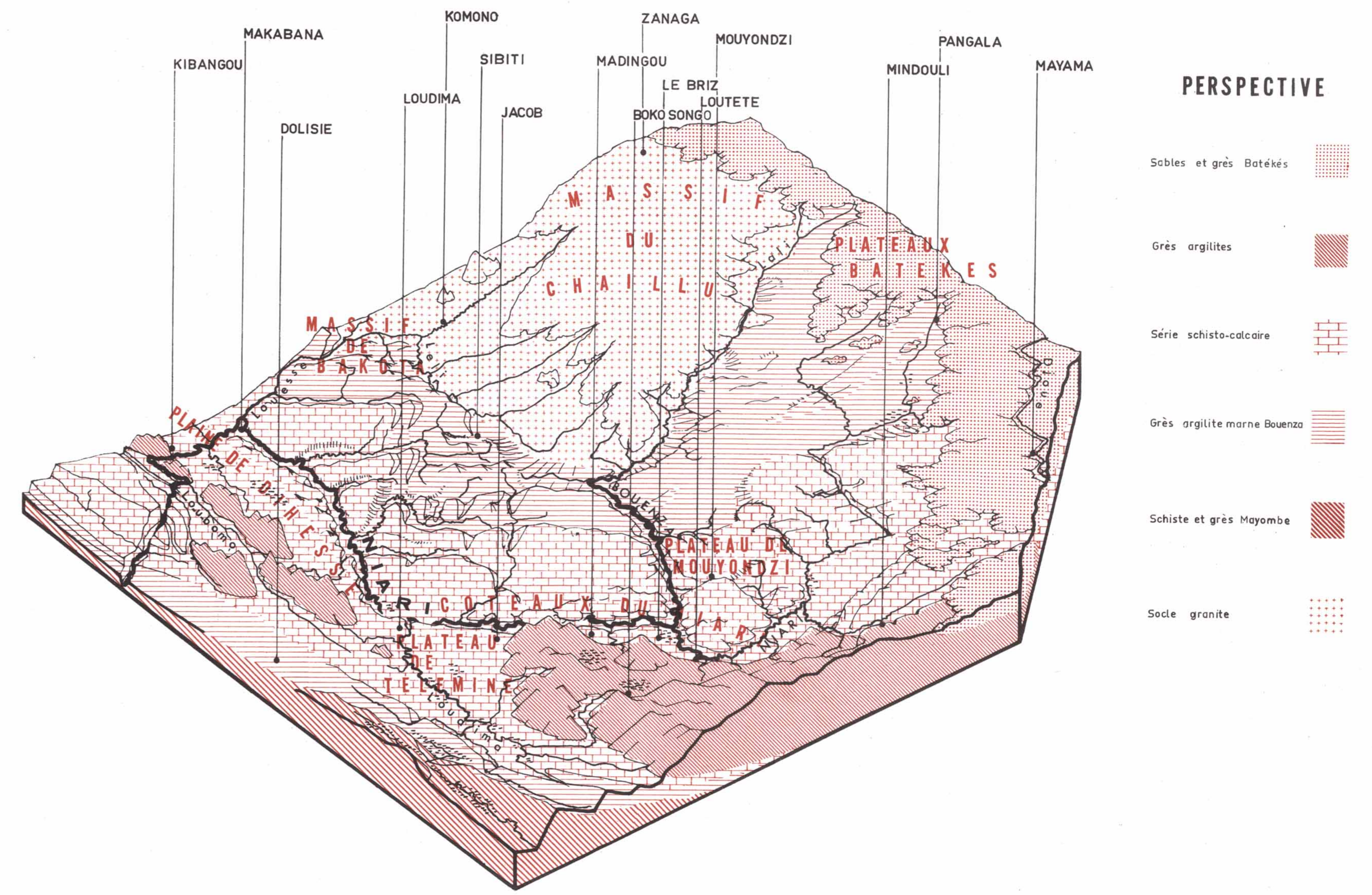
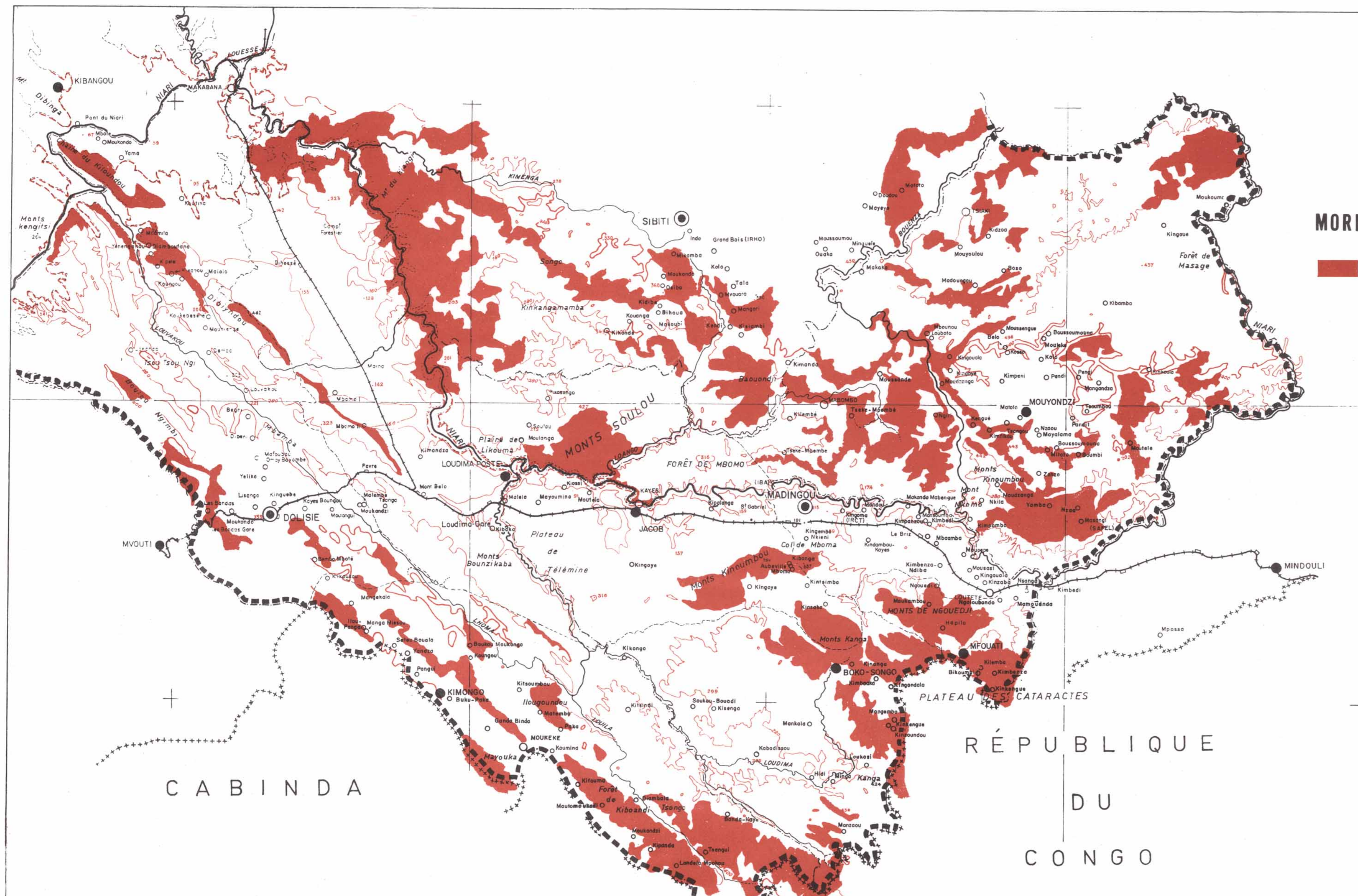


# LA VALLÉE DU NIARI

## AMENAGEMENT : ANALYSE

Éch : 1:500 000<sup>e</sup>



Dressé et dessiné par le S.M.U.H. sur fond I.G.N. d'après les documents I.G.N.-O.R.S.T.O.M.(Brazzaville) - S.M.U.H. - 1<sup>er</sup> Semestre 1965