

# RÉPARTITION ETHNIQUE

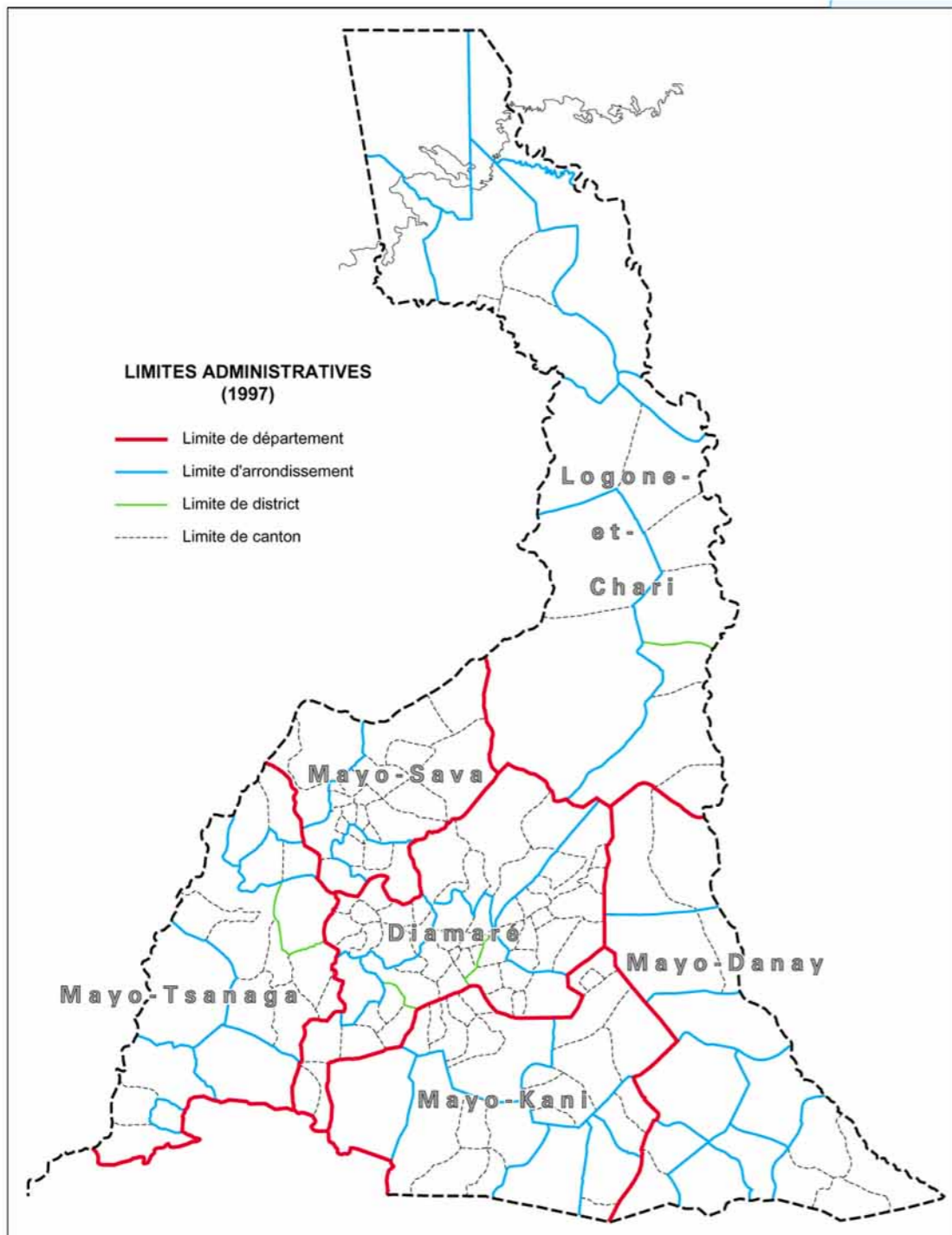
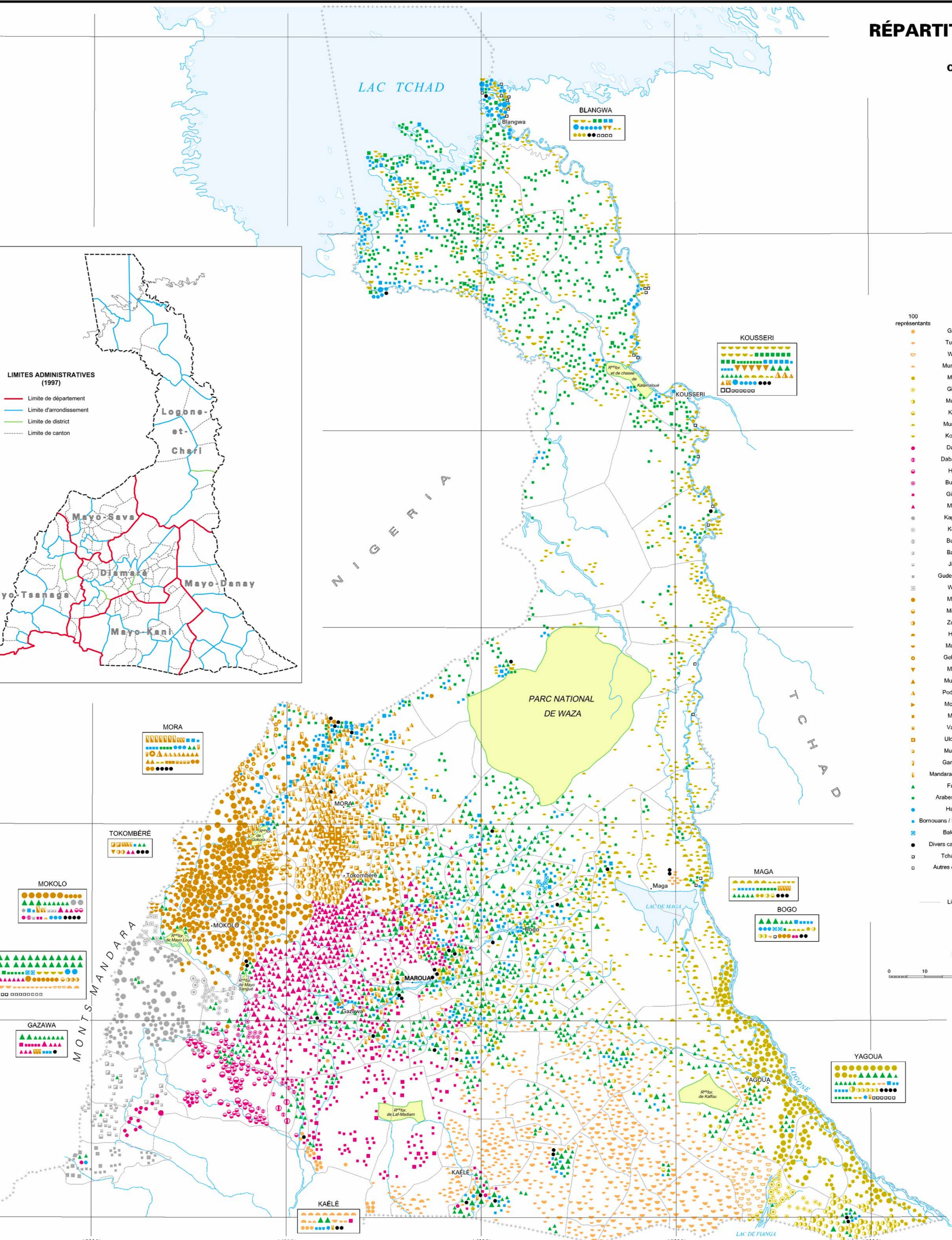
C. SEIGNOBOS  
(1995)

13°00'

11°00'

10°30'

10°00'



**LIMITES ADMINISTRATIVES (1997)**

- Limite de département
- Limite d'arrondissement
- Limite de district
- Limite de canton

**BLANGWA**

**KOUSSERI**

**MORA**

**TOKOMBÈRÉ**

**MOKOLO**

**MAROUA**

**GAZAWA**

**KAËLÉ**

**MAGA**

**BOGO**

**YAGOUA**

- | 100 représentants | 1 000 représentants         |
|-------------------|-----------------------------|
| ●                 | Gidar                       |
| ○                 | Tupuri                      |
| ◐                 | Wina                        |
| ◑                 | Mundang                     |
| ◒                 | Masa                        |
| ◓                 | Gisey                       |
| ◔                 | Musey                       |
| ◕                 | Kera                        |
| ◖                 | Musgum                      |
| ◗                 | Kotoko                      |
| ◘                 | Daba                        |
| ◙                 | Daba Kola                   |
| ◚                 | Hina                        |
| ◛                 | Budum                       |
| ◜                 | Giziga                      |
| ◝                 | Mofu                        |
| ◞                 | Kapsiki                     |
| ◟                 | Korci                       |
| ◠                 | Buwal                       |
| ◡                 | Bana                        |
| ◢                 | Jimí                        |
| ◣                 | Gude - Cede                 |
| ◤                 | Wula                        |
| ◥                 | Mafa                        |
| ◦                 | Mineo                       |
| ◧                 | Zulgo                       |
| ◨                 | Hide                        |
| ◩                 | Mabas                       |
| ◪                 | Geleba                      |
| ◫                 | Mada                        |
| ◬                 | Muktele                     |
| ◭                 | Podokwo                     |
| ◮                 | Molkwo                      |
| ◯                 | Mora                        |
| ◰                 | Vame                        |
| ◱                 | Ukeme                       |
| ◲                 | Muyang                      |
| ◳                 | Gamergu                     |
| ◴                 | Mandara / Wandala           |
| ◵                 | Fulbe                       |
| ◶                 | Arabes Showa                |
| ◷                 | Hausa                       |
| ◸                 | Bornouans / Sirata / Kanuri |
| ◹                 | Baldanu                     |
| ●                 | Divers camerounais          |
| ○                 | Tchadiens                   |
| ◻                 | Autres étrangers            |

Échelle 1 : 650 000

