



ETHIOPIA - FRANCE COOPERATIVE PROGRAM
WABI SHEBELLE SURVEY

IN COLLABORATION WITH

FRENCH MINISTRY
 OF FOREIGN AFFAIRS

NATIONAL WATER RESOURCES
 COMMISSION

BCEOM_ORSTOM.EDF
 IGN_B DPA

IV
GEOLOGICAL MAP OF OGA DEN

DUHUN

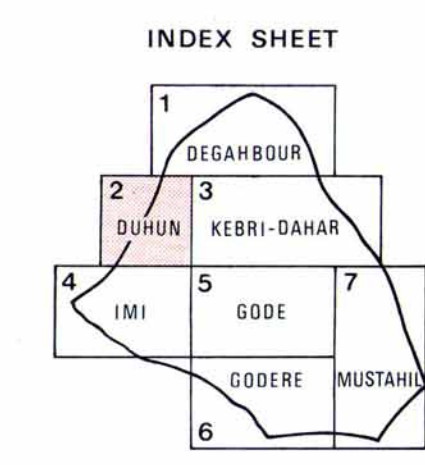
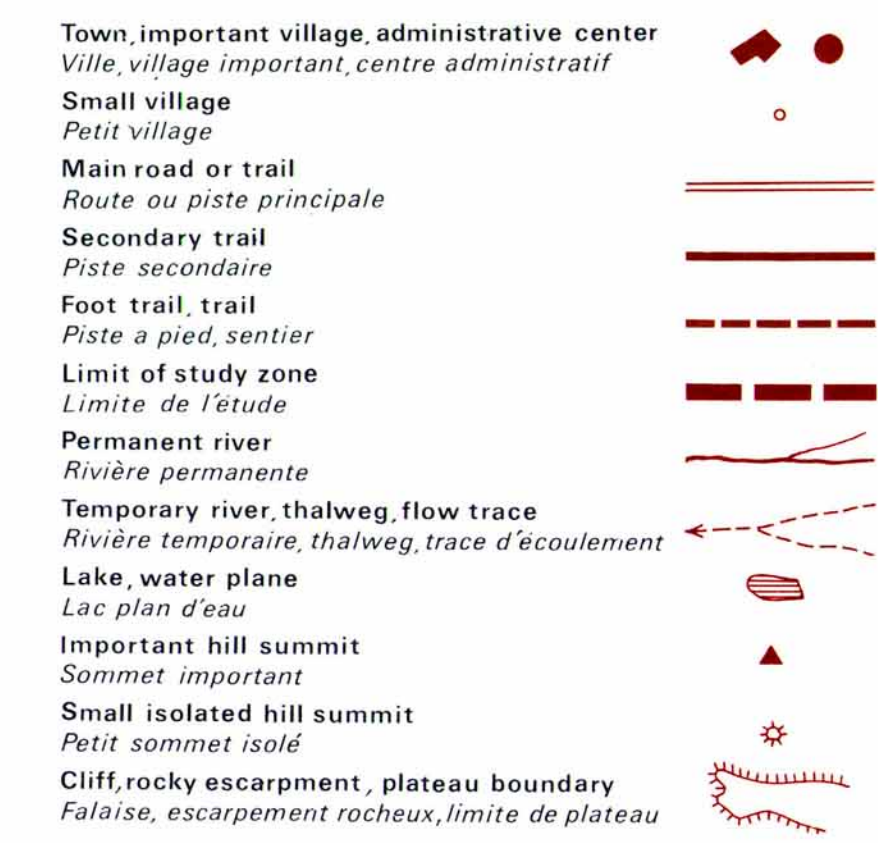
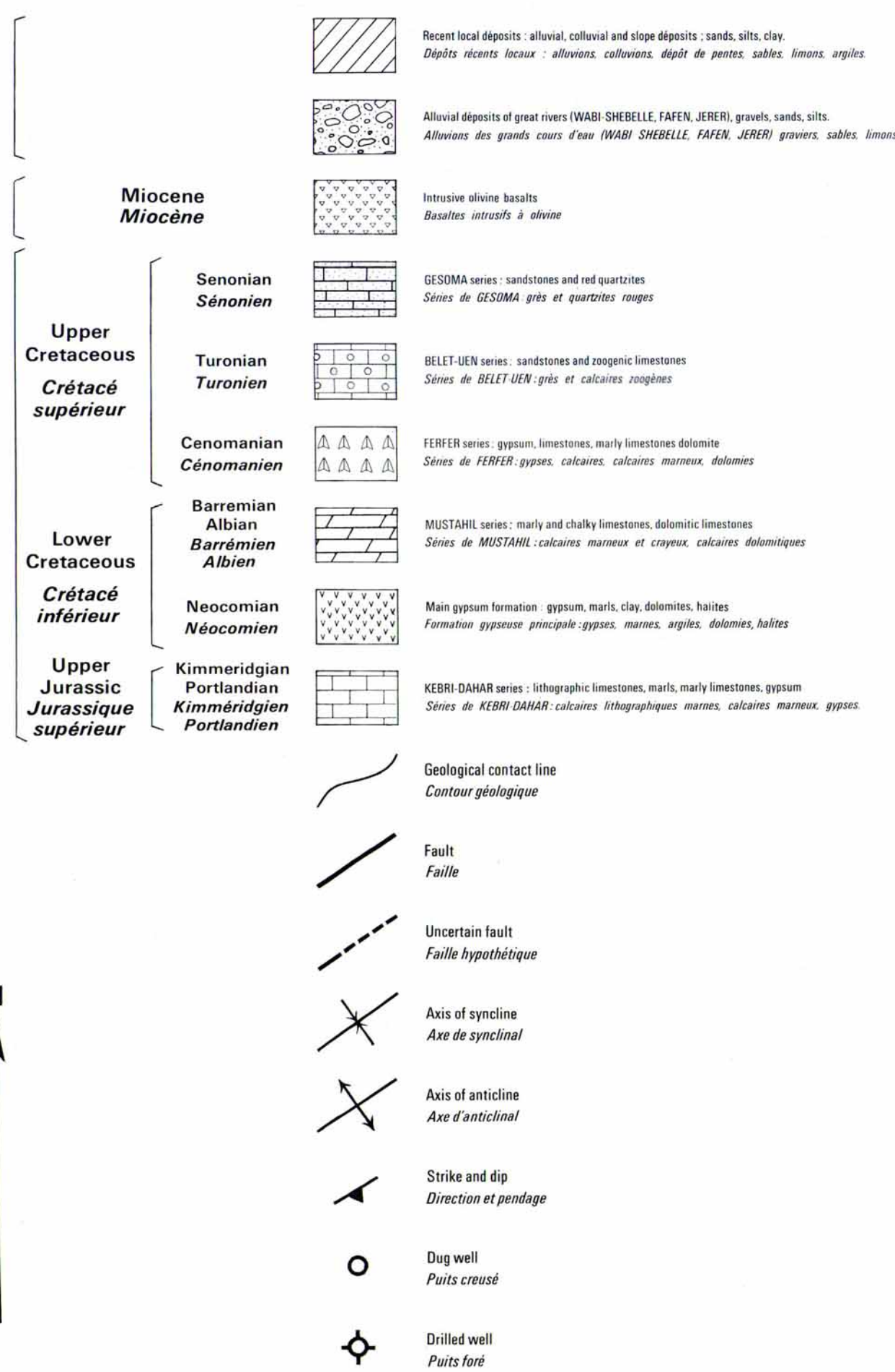
APRIL 1974
 MAP N°2



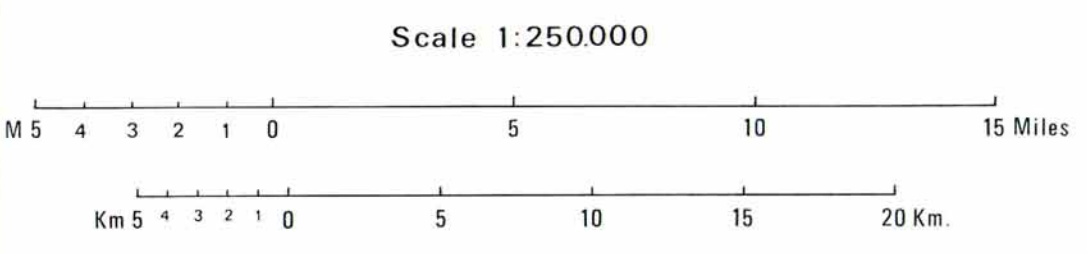
QUATERNARY
 QUATERNAIRE

TERTIARY
 TERTIAIRE

SECONDARY
 SECONDAIRE



Planimetric map based on the provisional sketches at approximately 1:100000 and using the map at 1:500000 established by the WAR OFFICE (EAST AFRICA, 1946)
 Drafted in 1969 by the NATIONAL WATER RESOURCES COMMISSION WABI SHEBELLE SURVEY.
Fond planimétrique établi d'après les esquisses provisoires au 1:100000 environ appuyées sur la carte au 1:500000 du WAR OFFICE EAST AFRICA (1946). Exécuté en 1969 au NATIONAL WATER RESOURCES COMMISSION - ETUDE DU WABI SHEBELLE.



This map has been established by D. BAUDUIN, with the collaboration of G. RICHE, J.-C. JULLIEN (ORSTOM scientists), Abere WAKJIRE and Tewolde SOLOMON ; G. CASTANY (BRGM) acting as a consultant.
Cette carte a été dressée par D. BAUDUIN, avec la collaboration de G. RICHE, J.-C. JULLIEN (chercheurs ORSTOM), Abere WAKJIRE et Tewolde SOLOMON ; G. CASTANY (BRGM) étant consultant.

Documents and sources : P. MOHR, Geologia of Ethiopia DANIELLI Geologia dell' Africa Orientale
 Documents et informations :
 Reports from: Ethiopian Ministry of mines and Water Resources Department
 Rapports de: