

የኢትዮጵያ ንጉሠ ነገሥት መንግሥት

ገብራዊ የውሃ ሀብት ልማት ኮሚሽን

IMPERIAL ETHIOPIAN GOVERNMENT
NATIONAL WATER RESOURCES COMMISSION



ETHIOPIA - FRANCE COOPERATIVE PROGRAM
WABI SHEBELLE SURVEY

IN COLLABORATION WITH
FRENCH MINISTRY OF FOREIGN AFFAIRS
NATIONAL WATER RESOURCES COMMISSION
BCEOM, ORSTOM, EDF
IGN, B DPA

IV
GEOLOGICAL MAP OF OGADEN

KEBRI-DAHAR

APRIL 1974
MAP N°3



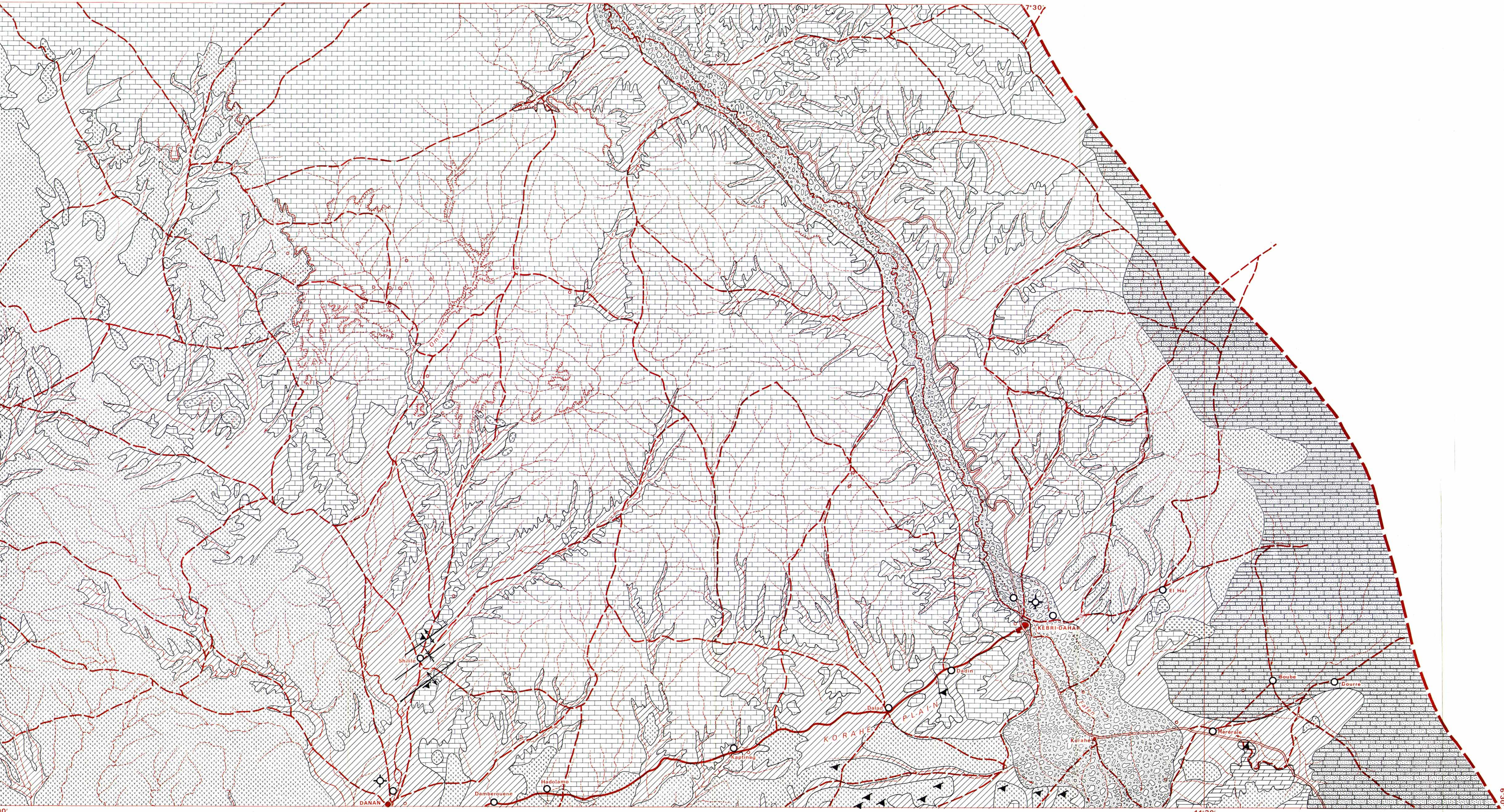
QUATERNARY
QUATÉNAIRE

TERTIARY
TERTIAIRE

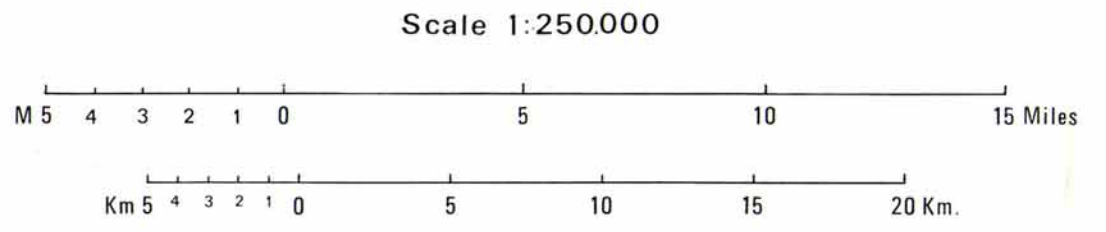
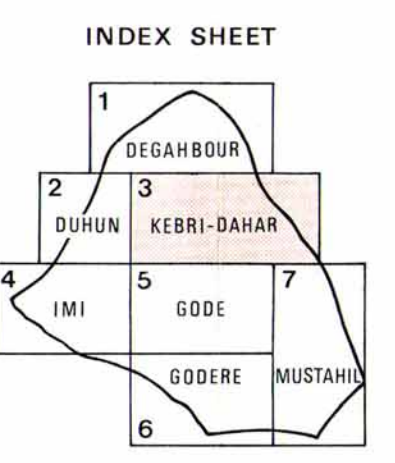
SECONDARY
SECONDAIRE

Recent local deposits - alluvial, colluvial and slope deposits - sands, silts, clay Dépôts récents locaux - alluviaux, colluviaux, dépôt de pentes, sables, limons, argiles	
Alluvial deposits of great rivers (WABI-SHEBELLE, FAYEN, JERRE), gravels, sands, silts Alluvions des grands cours d'eau (WABI-SHEBELLE, FAYEN, JERRE) graviers, sables, limons	
Intrusive siliceous basalts Basaltes intrusifs à silice	
Senonian SÉNONIEN GOSMA series - sandstones and red quarzites Séries de GOSMA: grès et quartzites rouges	
Turonian TURONIEN BILLET-DEU series - sandstones and zoogenic limestones Séries de BILLET-DEU: grès et calcaires zoogènes	
Cenomanian CÉNOMANIEN FERFER series - gypsum, limestones, marly limestones dolomitic Séries de FERFER: gypse, calcaires, calcaires marneux, dolomites	
Barremian ALBIEN MUSTAHIL series - marly and cherty limestones, dolomitic limestones Séries de MUSTAHIL: calcaires marneux et crayeux, calcaires dolomites	
Neocomian NÉOCOMIEN Main gypsum formation - gypsum, marls, clay, dolomites, halites Formation gypseuse principale: gypse, marne, argiles, dolomite, halite	
Upper Jurassic PORTLANDIAN KIMMERIDGIAN KIMMÉRIDIEN KEBRI-DAHAR series - lithographic limestones, marls, marly limestones, gypsum Séries de KEBRI-DAHAR: calcaires lithographiques marneux, calcaires marneux, gypse	

Geological contact line Contour géologique	
Fault Faille	
Uncertain fault Faille hypothétique	
Axis of syncline Axe de synclinal	
Axis of anticline Axe d'anticlinal	
Strike and dip Direction et pendage	
Dug well Puits creusé	
Drilled well Puits foré	



Planimetric map based on the provisional sketches at approximately 1:100000 and using the map at 1:500000 established by the WAR OFFICE (EAST AFRICA, 1946).
Drafted in 1969 by the NATIONAL WATER RESOURCES COMMISSION WABI SHEBELLE SURVEY.
Fond planimétrique établi d'après les esquisses provisoires au 1:100000 environ appuyées sur la carte au 1:500000 du WAR OFFICE EAST AFRICA (1946).
Exécuté en 1969 au NATIONAL WATER RESOURCES COMMISSION - ETUDE DU WABI SHEBELLE.



	Town, important village, administrative center Ville, village important, centre administratif
	Small village Petit village
	Main road or trail Route ou piste principale
	Secondary trail Piste secondaire
	Foot trail, trail Piste à pied, sentier
	Limit of study zone Limite de l'étude

	Permanent river Rivière permanente
	Temporary river, thalweg, flow trace Rivière temporaire, thalweg, trace d'écoulement
	Lake, water plane Lac plan d'eau
	Important hill summit Sommet important
	Small isolated hill summit Petit sommet isolé
	Cliff, rocky escarpment, plateau boundary Falaise, escarpement rocheux, limite de plateau

This map has been established by D. BAUDUIN, with the collaboration of G. RICHE, J.C. JULLIEN (ORSTOM scientists), Abere WAKJIRE and Tewolde SOLOMON; G. CASTANY (BRGM) acting as a consultant.
Documents and sources: P. MOHR, Geologia of Ethiopia DANIELLI Geologia dell' Africa Orientale
Documents et informations: Rappports de: Ethiopian Ministry of mines and Water Resources Department
Cette carte a été dressée par D. BAUDUIN, avec la collaboration de G. RICHE, J.-C. JULLIEN (chercheurs ORSTOM), Abere WAKJIRE et Tewolde SOLOMON; G. CASTANY (BRGM) étant consultant.